



[Go to Product page](#)

Datasheet for ABIN6755285
anti-SFRS9 antibody (AA 137-186)

1 Image

Overview

Quantity:	100 µL
Target:	SFRS9
Binding Specificity:	AA 137-186
Reactivity:	Human, Mouse, Rat, Cow, Dog, Guinea Pig, Horse, Rabbit, Bat, Pig, Xenopus laevis
Host:	Rabbit
Clonality:	Polyclonal
Conjugate:	This SFRS9 antibody is un-conjugated
Application:	Western Blotting (WB), Immunohistochemistry (IHC), Immunohistochemistry (Paraffin-embedded Sections) (IHC (p))

Product Details

Brand:	IHC-plus™
Immunogen:	Synthetic peptide located between aa137-186 of human SRSF9 (Q13242, NP_003760). Percent identity by BLAST analysis: Human, Chimpanzee, Gorilla, Gibbon, Galago, Marmoset, Mouse, Rat, Elephant, Dog, Bovine, Bat, Rabbit, Horse, Pig, Guinea pig, Xenopus, Sea squirt, Nematode (100%), Orangutan, Monkey, Hamster, Panda, Zebra finch, Chicken, Platypus, Salmon, Zebrafish (92%), Opossum, Stickleback (91%), Drosophila, Beetle (84%). Type of Immunogen: Synthetic peptide
Isotype:	IgG
Specificity:	Human SRSF9 / SFRS9

Product Details

Purification: Immunoaffinity purified

Target Details

Target: SFRS9

Alternative Name: SRSF9 / SFRS9 ([SFRS9 Products](#))

Background: Name/Gene ID: SRSF9

Synonyms: SRSF9, SR splicing factor 9, SRp30c, SFRS9, Splicing factor srp30c

Gene ID: 8683

NCBI Accession: [NP_003760](#)

Pathways: [Ribonucleoprotein Complex Subunit Organization](#)

Application Details

Application Notes: Approved: IHC, IHC-P (10 µg/mL), WB

Usage: ELISA titer using peptide based assay: 1:12500. Western Blot: Suggested dilution at 1 µg/mL in 5 % skim milk / PBS buffer, and HRP conjugated anti-Rabbit IgG should be diluted in 1:50000 - 100000 as second antibody.

Comment: Target Species of Antibody: Human

Restrictions: For Research Use only

Handling

Format: Lyophilized

Reconstitution: Distilled Water.

Concentration: Lot specific

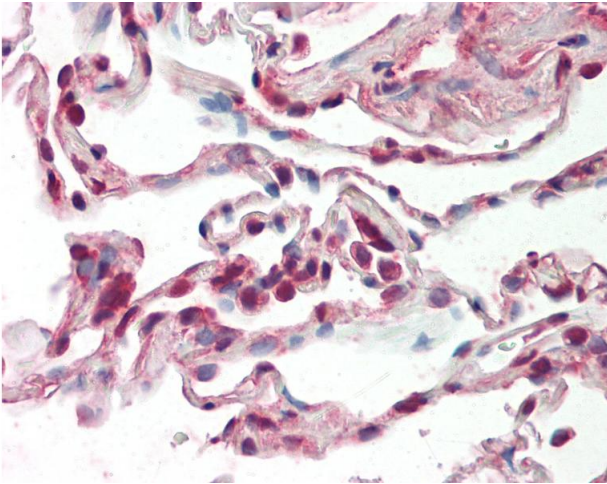
Buffer: Lyophilized from PBS with 2 % sucrose

Handling Advice: Avoid repeat freeze-thaw cycles.

Storage: 4 °C, -20 °C

Storage Comment: Long term: -20°C, the use of 50% glycerol is recommended if storing aliquots in -20°C for long term use (up to 1 year)

Short term (less than 1 week): 4°C. Avoid freeze-thaw cycles.



Immunohistochemistry

Image 1. Anti-SRSF9 / SFRS9 antibody IHC staining of human lung. Immunohistochemistry of formalin-fixed, paraffin-embedded tissue after heat-induced antigen retrieval. Antibody concentration 10 ug/ml. This image was taken for the unconjugated form of this pr ...