



[Go to Product page](#)

Datasheet for ABIN6755286
anti-FBLN3 antibody (C-Term)

1 Image

Overview

Quantity:	100 µL
Target:	FBLN3
Binding Specificity:	C-Term
Reactivity:	Human, Mouse, Rat, Rabbit, Cow, Dog, Horse, Pig, Monkey, Bat
Host:	Rabbit
Clonality:	Polyclonal
Conjugate:	This FBLN3 antibody is un-conjugated
Application:	Western Blotting (WB), Immunohistochemistry (IHC), Immunohistochemistry (Paraffin-embedded Sections) (IHC (p))

Product Details

Brand:	IHC-plus™
Immunogen:	Synthetic peptide from C-Terminus of human EFEMP1 (Q12805). Percent identity by BLAST analysis: Human, Chimpanzee, Gorilla, Gibbon, Monkey, Galago, Marmoset, Mouse, Rat, Elephant, Panda, Dog, Bovine, Bat, Rabbit, Horse, Pig (100%), Guinea pig, Turkey, Zebra finch, Sparrow, Chicken (92%), Opossum, Platypus (85%). Type of Immunogen: Synthetic peptide
Specificity:	Human EFEMP1
Purification:	Immunoaffinity purified

Target Details

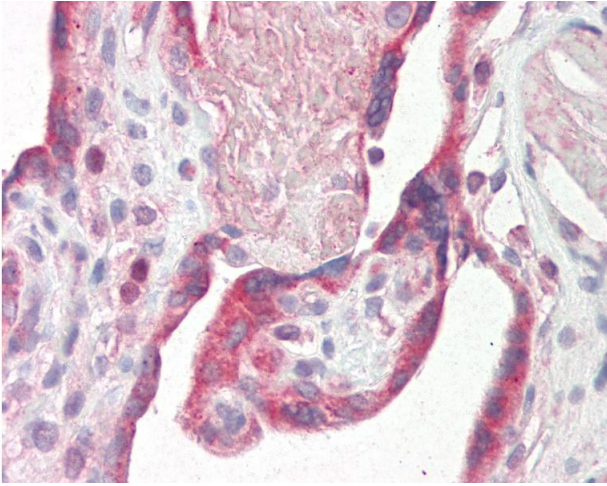
Target:	FBLN3
Alternative Name:	Fibulin-3 / EFEMP1 (FBLN3 Products)
Background:	Name/Gene ID: EFEMP1 Synonyms: EFEMP1, DHRD, Extracellular protein S1-5, FBNL, FBLN3, Fibrillin-like protein, Fibrillin-like, MLVT, S1-5, MTLV, DRAD, FIBL-3, Fibulin-3
Gene ID:	2202
Pathways:	EGFR Signaling Pathway

Application Details

Application Notes:	Approved: IHC, IHC-P (10 µg/mL), WB (0.2 - 1 µg/mL) Usage: Western Blot: Suggested dilution at 1 µg/mL in 5 % skim milk / PBS buffer, and HRP conjugated anti-Rabbit IgG should be diluted in 1: 50,000 - 100,000 as secondary antibody.
Comment:	Target Species of Antibody: Human
Restrictions:	For Research Use only

Handling

Format:	Lyophilized
Reconstitution:	Distilled water
Concentration:	Lot specific
Buffer:	Lyophilized from PBS with 2 % sucrose
Handling Advice:	Avoid repeat freeze-thaw cycles.
Storage:	4 °C, -20 °C
Storage Comment:	Long term: -20°C, the use of 50% glycerol is recommended if storing aliquots in -20°C for long term use (up to 1 year) Short term (less than 1 week): 4°C. Avoid freeze-thaw cycles.



Immunohistochemistry

Image 1. Anti-Fibulin-3 / EFEMP1 antibody IHC staining of human placenta. Immunohistochemistry of formalin-fixed, paraffin-embedded tissue after heat-induced antigen retrieval. Antibody concentration 10 ug/ml. This image was taken for the unconjugated form o ...