



[Go to Product page](#)

Datasheet for ABIN6755288

anti-CYP2C18 antibody (N-Term)

1 Image

Overview

Quantity:	100 µL
Target:	CYP2C18
Binding Specificity:	N-Term
Reactivity:	Human, Cow, Sheep
Host:	Rabbit
Clonality:	Polyclonal
Conjugate:	This CYP2C18 antibody is un-conjugated
Application:	Western Blotting (WB), Immunohistochemistry (IHC), Immunohistochemistry (Paraffin-embedded Sections) (IHC (p))

Product Details

Brand:	IHC-plus™
Immunogen:	Synthetic peptide from N-Terminus of human CYP2C18 (P33260, NP_000763). Percent identity by BLAST analysis: Human, Gorilla, Monkey (100%), Marmoset, Hamster (92%), Rat (90%), Galago, Mouse (85%), Gibbon, Pig (84%). Type of Immunogen: Synthetic peptide
Isotype:	IgG
Specificity:	Human CYP2C18
Purification:	Immunoaffinity purified

Target Details

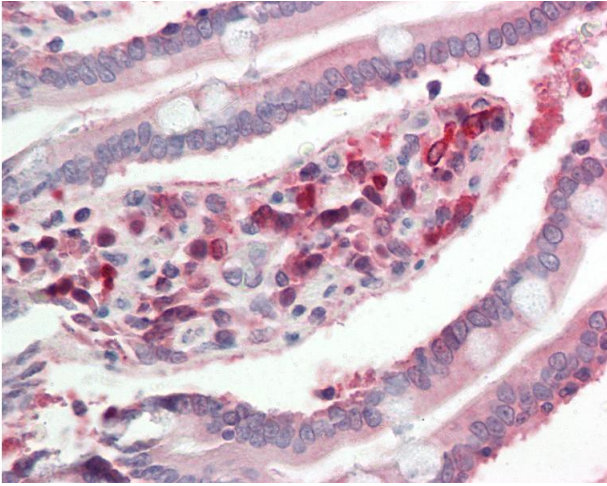
Target:	CYP2C18
Alternative Name:	CYP2C18 / CYP2C (CYP2C18 Products)
Background:	Name/Gene ID: CYP2C18 Family: Cytochrome P450 Synonyms: CYP2C18, CYP2C17, CYP11C18, Cytochrome P450 2C18, Cytochrome P450-6b/29c, p450IIC17, p450-6B/29C, CPCI, CYP2C, Unspecific monooxygenase
Gene ID:	1562
NCBI Accession:	NP_000763

Application Details

Application Notes:	Approved: IHC, IHC-P (10 µg/mL), WB (0.2 - 1 µg/mL) Usage: Western Blot: Suggested dilution at 1 µg/mL in 5 % skim milk / PBS buffer, and HRP conjugated anti-Rabbit IgG should be diluted in 1: 50,000 - 100,000 as second antibody. ELISA titer in peptide based assay: 1:1562500.
Comment:	Target Species of Antibody: Human
Restrictions:	For Research Use only

Handling

Format:	Lyophilized
Reconstitution:	Distilled water
Concentration:	Lot specific
Buffer:	Lyophilized from PBS with 2 % sucrose
Handling Advice:	Avoid repeat freeze-thaw cycles.
Storage:	4 °C,-20 °C
Storage Comment:	Long term: -20°C, the use of 50% glycerol is recommended if storing aliquots in -20°C for long term use (up to 1 year) Short term (less than 1 week): 4°C. Avoid freeze-thaw cycles.



Immunohistochemistry

Image 1. Anti-CYP2C18 / CYP2C antibody IHC staining of human small intestine. Immunohistochemistry of formalin-fixed, paraffin-embedded tissue after heat-induced antigen retrieval. Antibody concentration 10 ug/ml. This image was taken for the unconjugated fo ...