



[Go to Product page](#)

Datasheet for ABIN6755297
anti-ZMYM6 antibody (AA 17-66)

1 Image

Overview

Quantity:	100 µL
Target:	ZMYM6
Binding Specificity:	AA 17-66
Reactivity:	Human
Host:	Rabbit
Clonality:	Polyclonal
Conjugate:	This ZMYM6 antibody is un-conjugated
Application:	Western Blotting (WB), Immunohistochemistry (IHC), Immunohistochemistry (Paraffin-embedded Sections) (IHC (p))

Product Details

Brand:	IHC-plus™
Immunogen:	Synthetic peptide located between aa17-66 of human ZMYM6 (O95789-1). Percent identity by BLAST analysis: Human (100%). Type of Immunogen: Synthetic peptide
Specificity:	Human ZMYM6
Purification:	Immunoaffinity purified

Target Details

Target:	ZMYM6
---------	-------

Target Details

Alternative Name: ZMYM6 ([ZMYM6 Products](#))

Background: Name/Gene ID: ZMYM6

Synonyms: ZMYM6, Buster2, MYM, Zinc finger MYM-type protein 6, ZNF258, KIAA1353, Zinc finger protein 258, Zinc finger, MYM-type 6, ZNF198L4

Gene ID: 9204

Application Details

Application Notes: Approved: IHC, IHC-P (10 µg/mL), WB

Comment: Target Species of Antibody: Human

Restrictions: For Research Use only

Handling

Format: Lyophilized

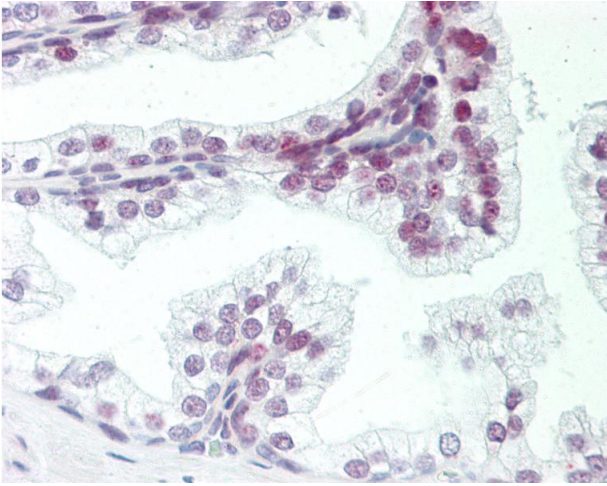
Reconstitution: Distilled water

Concentration: Lot specific

Buffer: Lyophilized from PBS, 2 % sucrose.

Storage: 4 °C, -20 °C

Storage Comment: Short term: 4°C
Long term: -20°C.



Immunohistochemistry

Image 1. Human Prostate: Formalin-Fixed, Paraffin-Embedded (FFPE). This image was taken for the unconjugated form of this product. Other forms have not been tested.