



[Go to Product page](#)

Datasheet for ABIN6755300
anti-SIDT2 antibody (AA 72-121)

1 Image

Overview

Quantity:	100 µL
Target:	SIDT2
Binding Specificity:	AA 72-121
Reactivity:	Human, Rat, Cow, Guinea Pig, Bat, Monkey, Pig
Host:	Rabbit
Clonality:	Polyclonal
Conjugate:	This SIDT2 antibody is un-conjugated
Application:	Western Blotting (WB), Immunohistochemistry (Paraffin-embedded Sections) (IHC (p)), Immunohistochemistry (IHC)

Product Details

Brand:	IHC-plus™
Immunogen:	Synthetic peptide located between aa72-121 of human SIDT2 (Q8NBJ9, NP_001035545). Percent identity by BLAST analysis: Human, Chimpanzee, Gorilla, Gibbon, Galago, Marmoset, Rat, Elephant, Bovine, Bat, Pig, Guinea pig (100%), Mouse, Panda, Dog, Rabbit, Horse (92%). Type of Immunogen: Synthetic peptide
Isotype:	IgG
Specificity:	Human SIDT2
Purification:	Immunoaffinity purified

Target Details

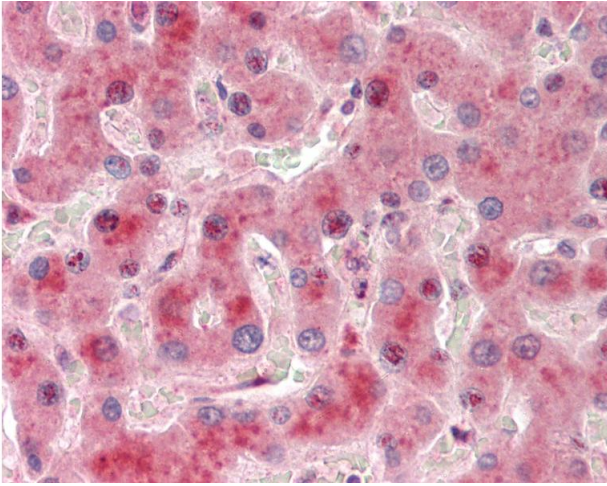
Target:	SIDT2
Alternative Name:	SIDT2 (SIDT2 Products)
Background:	Name/Gene ID: SIDT2 Synonyms: SIDT2, CGI-40
Gene ID:	51092
NCBI Accession:	NP_001035545

Application Details

Application Notes:	Approved: IHC, IHC-P (10 µg/mL), WB (0.2 - 1 µg/mL) Usage: Western Blot: Suggested dilution at 1 µg/mL in 5 % skim milk / PBS buffer, and HRP conjugated anti-Rabbit IgG should be diluted in 1: 50,000 - 100,000 as second antibody. ELISA titer in peptide based assay: 1:1562500.
Comment:	Target Species of Antibody: Human
Restrictions:	For Research Use only

Handling

Format:	Lyophilized
Reconstitution:	Distilled water
Concentration:	Lot specific
Buffer:	Lyophilized from PBS with 2 % sucrose
Handling Advice:	Avoid repeat freeze-thaw cycles.
Storage:	4 °C, -20 °C
Storage Comment:	Long term: -20°C, the use of 50% glycerol is recommended if storing aliquots in -20°C for long term use (up to 1 year) Short term (less than 1 week): 4°C. Avoid freeze-thaw cycles.



Immunohistochemistry

Image 1. Human Liver: Formalin-Fixed, Paraffin-Embedded (FFPE). This image was taken for the unconjugated form of this product. Other forms have not been tested.