

Datasheet for ABIN6755304
anti-FBLN3 antibody (AA 396-445)[Go to Product page](#)

1 Image

Overview

Quantity:	100 µL
Target:	FBLN3
Binding Specificity:	AA 396-445
Reactivity:	Human, Mouse, Rat, Rabbit, Cow, Dog, Guinea Pig, Horse, Pig, Monkey, Bat
Host:	Rabbit
Clonality:	Polyclonal
Conjugate:	This FBLN3 antibody is un-conjugated
Application:	Western Blotting (WB), Immunohistochemistry (IHC), Immunohistochemistry (Paraffin-embedded Sections) (IHC (p))

Product Details

Brand:	IHC-plus™
Immunogen:	Synthetic peptide located between aa396-445 of human EFEMP1 (Q12805). Percent identity by BLAST analysis: Human, Chimpanzee, Gorilla, Gibbon, Monkey, Marmoset, Mouse, Rat, Elephant, Panda, Dog, Bovine, Bat, Rabbit, Horse, Pig, Opossum, Platypus (100%), Galago, Turkey, Zebra finch, Sparrow, Chicken, Xenopus, Salmon, Stickleback, Zebrafish (92%), Guinea pig, Lizard (85%). Type of Immunogen: Synthetic peptide
Isotype:	IgG
Specificity:	Human EFEMP1

Product Details

Purification: Immunoaffinity purified

Target Details

Target: FBLN3

Alternative Name: Fibulin-3 / EFEMP1 ([FBLN3 Products](#))

Background: Name/Gene ID: EFEMP1

Synonyms: EFEMP1, DHRD, Extracellular protein S1-5, FBNL, FBLN3, Fibrillin-like protein, Fibrillin-like, MLVT, S1-5, MTLV, DRAD, FIBL-3, Fibulin-3

Gene ID: 2202

Pathways: [EGFR Signaling Pathway](#)

Application Details

Application Notes: Approved: IHC, IHC-P (10 µg/mL), WB (0.2 - 1 µg/mL)

Usage: Western Blot: Suggested dilution at 1 µg/mL in 5 % skim milk / PBS buffer, and HRP conjugated anti-Rabbit IgG should be diluted in 1: 50,000 - 100,000 as second antibody. ELISA titer in peptide based assay: 1:312500.

Comment: Target Species of Antibody: Human

Restrictions: For Research Use only

Handling

Format: Lyophilized

Reconstitution: Distilled water

Concentration: Lot specific

Buffer: Lyophilized from PBS with 2 % sucrose

Handling Advice: Avoid repeat freeze-thaw cycles.

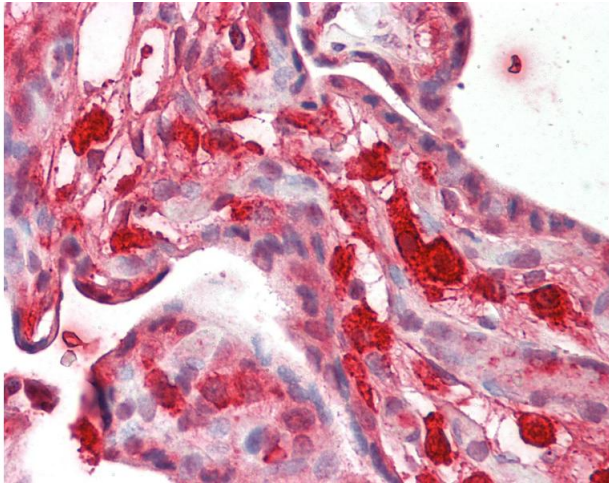
Storage: 4 °C, -20 °C

Storage Comment: Long term: -20°C, the use of 50% glycerol is recommended if storing aliquots in -20°C for long term use (up to 1 year)

Handling

Short term (less than 1 week): 4°C. Avoid freeze-thaw cycles.

Images



Immunohistochemistry

Image 1. Human Placenta: Formalin-Fixed, Paraffin-Embedded (FFPE). This image was taken for the unconjugated form of this product. Other forms have not been tested.