

Datasheet for ABIN6755309
anti-SLC33A1 antibody (AA 216-265)[Go to Product page](#)

1 Image

Overview

Quantity:	100 µL
Target:	SLC33A1
Binding Specificity:	AA 216-265
Reactivity:	Human, Mouse, Rat, Horse, Rabbit, Zebrafish (Danio rerio), Bat, Chicken, Hamster, Monkey
Host:	Rabbit
Clonality:	Polyclonal
Conjugate:	This SLC33A1 antibody is un-conjugated
Application:	Western Blotting (WB), Immunohistochemistry (IHC), Immunohistochemistry (Paraffin-embedded Sections) (IHC (p))

Product Details

Brand:	IHC-plus™
Immunogen:	<p>Synthetic peptide located between aa216-265 of human SLC33A1 (O00400, NP_004724).</p> <p>Percent identity by BLAST analysis: Human, Chimpanzee, Gorilla, Gibbon, Galago, Marmoset, Mouse, Rat, Hamster, Bat, Rabbit, Horse, Opossum, Turkey, Chicken (100%), Elephant, Panda, Dog, Bovine, Guinea pig, Lizard (92%), Zebra finch, Zebrafish (85%).</p> <p>Type of Immunogen: Synthetic peptide</p>
Isotype:	IgG
Specificity:	Human SLC33A1
Purification:	Immunoaffinity purified

Target Details

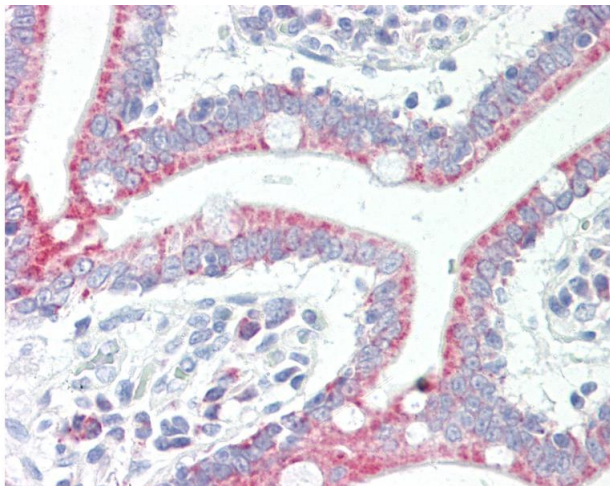
Target:	SLC33A1
Alternative Name:	SLC33A1 (SLC33A1 Products)
Background:	Name/Gene ID: SLC33A1 Subfamily: Acetyl-Coenzyme A Transporter Family: Transporter Synonyms: SLC33A1, ACATN, Acetyl-CoA transporter 1, Acetyl-CoA transporter, CCHLND, Acetyl-Coenzyme A transporter, SPG42, AT-1, AT1
Gene ID:	9197
NCBI Accession:	NP_004724

Application Details

Application Notes:	Approved: IHC, IHC-P (10 µg/mL), WB (0.2 - 1 µg/mL) Usage: Western Blot: Suggested dilution at 1 µg/mL in 5 % skim milk / PBS buffer, and HRP conjugated anti-Rabbit IgG should be diluted in 1: 50,000 - 100,000 as second antibody. ELISA titer in peptide based assay: 1:62500.
Comment:	Target Species of Antibody: Human
Restrictions:	For Research Use only

Handling

Format:	Lyophilized
Reconstitution:	Distilled water
Concentration:	Lot specific
Buffer:	Lyophilized from PBS with 2 % sucrose
Handling Advice:	Avoid repeat freeze-thaw cycles.
Storage:	4 °C, -20 °C
Storage Comment:	Long term: -20°C, the use of 50% glycerol is recommended if storing aliquots in -20°C for long term use (up to 1 year) Short term (less than 1 week): 4°C. Avoid freeze-thaw cycles.



Immunohistochemistry

Image 1. Human Small Intestine: Formalin-Fixed, Paraffin-Embedded (FFPE). This image was taken for the unconjugated form of this product. Other forms have not been tested.