

Datasheet for ABIN6755310
anti-ALDH3A2 antibody (AA 179-228)[Go to Product page](#)

1 Image

Overview

Quantity:	100 µL
Target:	ALDH3A2
Binding Specificity:	AA 179-228
Reactivity:	Human, Rat, Mouse, Rabbit, Cow, Dog, Monkey, Guinea Pig, Horse, Pig, Chicken, Bat, Xenopus laevis, Zebrafish (Danio rerio)
Host:	Rabbit
Clonality:	Polyclonal
Conjugate:	This ALDH3A2 antibody is un-conjugated
Application:	Western Blotting (WB), Immunohistochemistry (IHC), Immunohistochemistry (Paraffin-embedded Sections) (IHC (p))

Product Details

Brand:	IHC-plus™
Immunogen:	Synthetic peptide located between aa179-228 of human ALDH3A2 (P51648, NP_001026976). Percent identity by BLAST analysis: Human, Gorilla, Orangutan, Gibbon, Monkey, Galago, Marmoset, Mouse, Rat, Elephant, Dog, Bovine, Bat, Rabbit, Horse, Pig, Opossum, Guinea pig, Turkey, Zebra finch, Chicken, Platypus, Xenopus, Salmon, Zebrafish, Grape (100%). Type of Immunogen: Synthetic peptide
Specificity:	Human ALDH3A2
Purification:	Immunoaffinity purified

Target Details

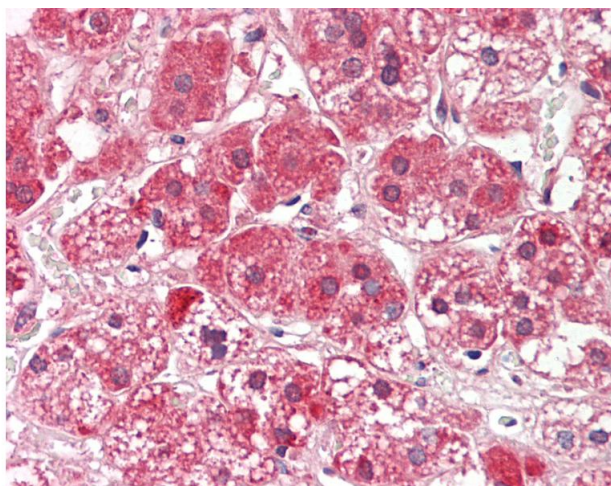
Target:	ALDH3A2
Alternative Name:	ALDH3A2 (ALDH3A2 Products)
Background:	Name/Gene ID: ALDH3A2 Synonyms: ALDH3A2, Aldehyde dehydrogenase 10, ALDH10, Fatty aldehyde dehydrogenase, FALDH, SLS
Gene ID:	224
NCBI Accession:	NP_001026976

Application Details

Application Notes:	Approved: IHC, IHC-P (10 µg/mL), WB (0.2 - 1 µg/mL) Usage: Western Blot: Suggested dilution at 1 µg/mL in 5 % skim milk / PBS buffer, and HRP conjugated anti-Rabbit IgG should be diluted in 1: 50,000 - 100,000 as secondary antibody.
Comment:	Target Species of Antibody: Human
Restrictions:	For Research Use only

Handling

Format:	Lyophilized
Reconstitution:	Distilled water
Concentration:	Lot specific
Buffer:	Lyophilized from PBS with 2 % sucrose
Handling Advice:	Avoid repeat freeze-thaw cycles.
Storage:	4 °C, -20 °C
Storage Comment:	Long term: -20°C, the use of 50% glycerol is recommended if storing aliquots in -20°C for long term use (up to 1 year) Short term (less than 1 week): 4°C. Avoid freeze-thaw cycles.



Immunohistochemistry

Image 1. Human Adrenal: Formalin-Fixed, Paraffin-Embedded (FFPE). This image was taken for the unconjugated form of this product. Other forms have not been tested.