



Datasheet for ABIN6755314
anti-ATP2A2 antibody (AA 794-843)



[Go to Product page](#)

1 Image

Overview

| | |
|----------------------|---|
| Quantity: | 100 µL |
| Target: | ATP2A2 |
| Binding Specificity: | AA 794-843 |
| Reactivity: | Human, Mouse, Rat, Rabbit, Monkey, Cow, Dog, Guinea Pig, Horse, Pig, Xenopus laevis, Zebrafish (Danio rerio), Chicken, Drosophila melanogaster, Bat, Insect |
| Host: | Rabbit |
| Clonality: | Polyclonal |
| Conjugate: | This ATP2A2 antibody is un-conjugated |
| Application: | Western Blotting (WB), Immunohistochemistry (IHC), Immunohistochemistry (Paraffin-embedded Sections) (IHC (p)) |

Product Details

| | |
|------------|--|
| Brand: | IHC-plus™ |
| Immunogen: | Synthetic peptide located between aa794-843 of human ATP2A2 (P16615, NP_733765). Percent identity by BLAST analysis: Human, Chimpanzee, Gorilla, Gibbon, Monkey, Galago, Marmoset, Mouse, Rat, Elephant, Panda, Dog, Cat, Bovine, Bat, Rabbit, Horse, Pig, Opossum, Guinea pig, Turkey, Zebra finch, Chicken, Platypus, Xenopus, Seabass, Stickleback, Zebrafish, Blood fluke, Drosophila, Mosquito (100%). Type of Immunogen: Synthetic peptide |
| Isotype: | IgG |

Product Details

Specificity: Human ATP2A2 / SERCA2

Purification: Immunoaffinity purified

Target Details

Target: ATP2A2

Alternative Name: ATP2A2 / SERCA2 ([ATP2A2 Products](#))

Background: Name/Gene ID: ATP2A2
Subfamily: ATPase - P type, type IIA
Family: Transporter

Synonyms: ATP2A2, ATP2B, Calcium pump 2, DAR, SR Ca(2+)-ATPase 2, Cardiac Ca²⁺ ATPase, DD, SERCA2

Gene ID: 488

NCBI Accession: [NP_733765](#)

Pathways: [Myometrial Relaxation and Contraction](#), [ER-Nucleus Signaling](#), [Ribonucleoside Biosynthetic Process](#)

Application Details

Application Notes: Approved: IHC, IHC-P (10 µg/mL), WB

Usage: ELISA titer using peptide based assay: 1:62500. Western Blot: Suggested dilution at 1 µg/mL in 5 % skim milk / PBS buffer, and HRP conjugated anti-Rabbit IgG should be diluted in 1:50000 - 100000 as second antibody.

Comment: Target Species of Antibody: Human

Restrictions: For Research Use only

Handling

Format: Lyophilized

Reconstitution: Distilled Water.

Concentration: Lot specific

Buffer: Lyophilized from PBS with 2 % sucrose

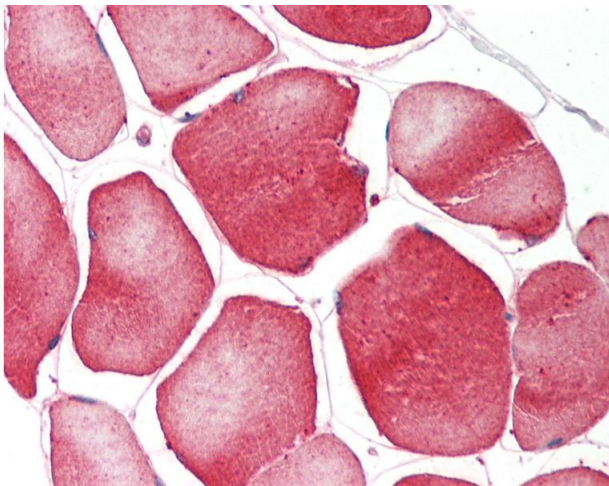
Handling

Handling Advice: Avoid repeat freeze-thaw cycles.

Storage: 4 °C,-20 °C

Storage Comment: Long term: -20°C, the use of 50% glycerol is recommended if storing aliquots in -20°C for long term use (up to 1 year)
Short term (less than 1 week): 4°C. Avoid freeze-thaw cycles.

Images



Immunohistochemistry

Image 1. Human Skeletal Muscle: Formalin-Fixed, Paraffin-Embedded (FFPE). This image was taken for the unconjugated form of this product. Other forms have not been tested.