

Datasheet for ABIN6755315  
**anti-ALDH6A1 antibody (AA 323-372)**



[Go to Product page](#)

1 Image

## Overview

Quantity:	100 µL
Target:	ALDH6A1
Binding Specificity:	AA 323-372
Reactivity:	Human, Mouse, Rat, Dog, Cow, Pig, Rabbit, Horse, Guinea Pig, Zebrafish (Danio rerio), Bat, Monkey, Xenopus laevis, Chicken
Host:	Rabbit
Clonality:	Polyclonal
Conjugate:	This ALDH6A1 antibody is un-conjugated
Application:	Western Blotting (WB), Immunohistochemistry (IHC), Immunohistochemistry (Paraffin-embedded Sections) (IHC (p))

## Product Details

Brand:	IHC-plus™
Immunogen:	<p>Synthetic peptide located between aa323-372 of human ALDH6A1 (Q02252, NP_005580).</p> <p>Percent identity by BLAST analysis: Human, Gorilla, Orangutan, Gibbon, Monkey, Galago, Marmoset, Mouse, Rat, Panda, Dog, Bovine, Bat, Rabbit, Horse, Pig, Opossum, Guinea pig, Turkey, Zebra finch, Chicken, Lizard, Xenopus, Salmon, Stickleback, Zebrafish (100%), Elephant (92%), Platypus (84%).</p> <p>Type of Immunogen: Synthetic peptide</p>
Specificity:	Human ALDH6A1

## Product Details

Purification: Immunoaffinity purified

## Target Details

Target: ALDH6A1

Alternative Name: ALDH6A1 ([ALDH6A1 Products](#))

Background: Name/Gene ID: ALDH6A1

Synonyms: ALDH6A1, MMSDH, MMSADHA

Gene ID: 4329

NCBI Accession: [NP\\_005580](#)

Pathways: [Brown Fat Cell Differentiation](#)

## Application Details

Application Notes: Approved: IHC, IHC-P (10 µg/mL), WB (0.2 - 1 µg/mL)

Usage: Western Blot: Suggested dilution at 1 µg/mL in 5 % skim milk / PBS buffer, and HRP conjugated anti-Rabbit IgG should be diluted in 1: 50,000 - 100,000 as secondary antibody.

Comment: Target Species of Antibody: Human

Restrictions: For Research Use only

## Handling

Format: Lyophilized

Reconstitution: Distilled water

Concentration: Lot specific

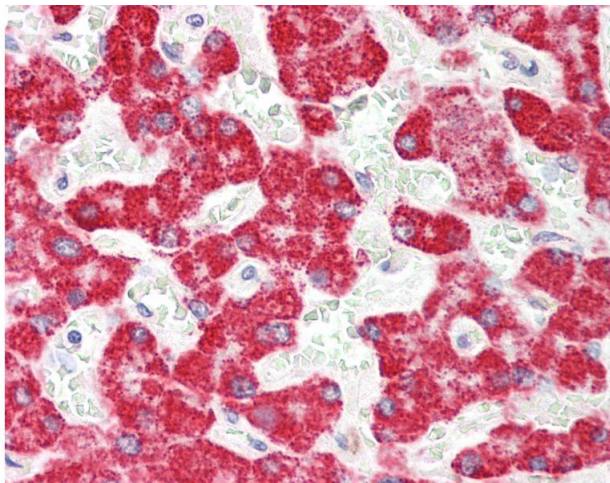
Buffer: Lyophilized from PBS with 2 % sucrose

Handling Advice: Avoid repeat freeze-thaw cycles.

Storage: 4 °C, -20 °C

Storage Comment: Long term: -20°C, the use of 50% glycerol is recommended if storing aliquots in -20°C for long term use (up to 1 year)

Short term (less than 1 week): 4°C. Avoid freeze-thaw cycles.



#### Immunohistochemistry

**Image 1.** Human Liver: Formalin-Fixed, Paraffin-Embedded (FFPE). This image was taken for the unconjugated form of this product. Other forms have not been tested.