



[Go to Product page](#)

Datasheet for ABIN6755317  
**anti-TCF25 antibody (AA 182-231)**

1 Image

Overview

Quantity:	100 µL
Target:	TCF25
Binding Specificity:	AA 182-231
Reactivity:	Human, Mouse, Rat, Cow, Dog, Guinea Pig, Horse, Rabbit, Bat, Pig, Monkey
Host:	Rabbit
Clonality:	Polyclonal
Conjugate:	This TCF25 antibody is un-conjugated
Application:	Western Blotting (WB), Immunohistochemistry (IHC), Immunohistochemistry (Paraffin-embedded Sections) (IHC (p))

Product Details

Brand:	IHC-plus™
Immunogen:	Synthetic peptide located between aa182-231 of human TCF25 (Q9BQ70, NP_055787). Percent identity by BLAST analysis: Human, Chimpanzee, Gorilla, Gibbon, Marmoset, Mouse, Rat, Elephant, Dog, Bovine, Bat, Rabbit, Horse, Pig, Guinea pig (100%), Galago, Opossum, Stickleback (92%), Platypus (85%).  Type of Immunogen: Synthetic peptide
Isotype:	IgG
Specificity:	Human TCF25
Purification:	Immunoaffinity purified

## Target Details

---

Target:	TCF25
Alternative Name:	TCF25 ( <a href="#">TCF25 Products</a> )
Background:	Name/Gene ID: TCF25  Synonyms: TCF25, FKSG26, Hulp1, Nuclear localized protein 1, NULP1, PRO2620, TCF-25, HKIAA1049, KIAA1049, Transcription factor 25
Gene ID:	22980
NCBI Accession:	<a href="#">NP_055787</a>

## Application Details

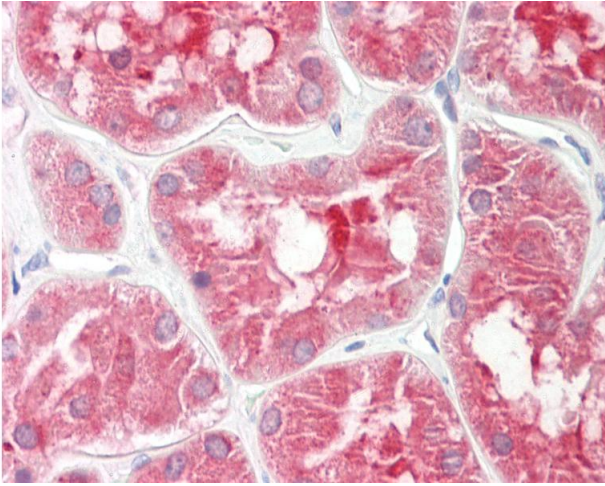
---

Application Notes:	Approved: IHC, IHC-P (10 µg/mL), WB  Usage: ELISA titer using peptide based assay: 1:62500. Western Blot: Suggested dilution at 1 µg/mL in 5 % skim milk / PBS buffer, and HRP conjugated anti-Rabbit IgG should be diluted in 1:50000 - 100000 as second antibody.
Comment:	Target Species of Antibody: Human
Restrictions:	For Research Use only

## Handling

---

Format:	Lyophilized
Reconstitution:	Distilled Water.
Concentration:	Lot specific
Buffer:	Lyophilized from PBS with 2 % sucrose
Handling Advice:	Avoid repeat freeze-thaw cycles.
Storage:	4 °C, -20 °C
Storage Comment:	Long term: -20°C, the use of 50% glycerol is recommended if storing aliquots in -20°C for long term use (up to 1 year)  Short term (less than 1 week): 4°C. Avoid freeze-thaw cycles.



### Immunohistochemistry

**Image 1.** Human Kidney: Formalin-Fixed, Paraffin-Embedded (FFPE). This image was taken for the unconjugated form of this product. Other forms have not been tested.