

Datasheet for ABIN6755318
anti-SULT1A1 antibody (N-Term)[Go to Product page](#)

1 Image

Overview

Quantity:	100 µL
Target:	SULT1A1
Binding Specificity:	N-Term
Reactivity:	Human, Mouse, Horse, Pig, Rabbit, Cow, Monkey, Hamster
Host:	Rabbit
Clonality:	Polyclonal
Conjugate:	This SULT1A1 antibody is un-conjugated
Application:	Western Blotting (WB), Immunohistochemistry (IHC), Immunohistochemistry (Paraffin-embedded Sections) (IHC (p))

Product Details

Brand:	IHC-plus™
Immunogen:	Synthetic peptide from N-Terminus of human SULT1A1 (P50226, NP_001046). Percent identity by BLAST analysis: Human, Chimpanzee, Gibbon, Monkey, Marmoset, Hamster, Bovine, Rabbit, Horse (100%), Gorilla, Galago, Rat, Elephant, Panda, Dog, Opossum, Chicken, Xenopus (92%), Mouse, Pig, Guinea pig, Salmon, Sablefish, Pike, Zebrafish (85%), Turkey, Smelt (84%). Type of Immunogen: Synthetic peptide
Isotype:	IgG
Specificity:	Human SULT1A1
Purification:	Immunoaffinity purified

Target Details

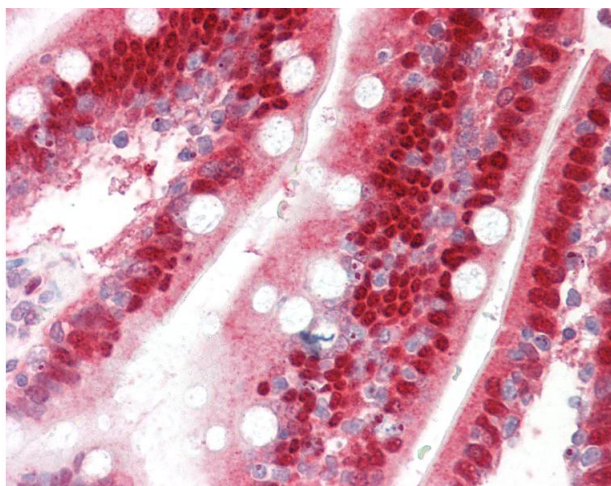
Target:	SULT1A1
Alternative Name:	Sulfotransferase 1A1 / SULT1A1 (SULT1A1 Products)
Background:	Name/Gene ID: SULT1A1 Synonyms: SULT1A1, Aryl sulfotransferase 1, HAST1/HAST2, P-PST 1, P-PST, PST, STP1, Sulfotransferase 1A1, STP, Phenol sulfotransferase 1, ST1A1, ST1A3, Ts-PST, TSPST1
Gene ID:	6817
NCBI Accession:	NP_001046

Application Details

Application Notes:	Approved: IHC, IHC-P (10 µg/mL), WB Usage: ELISA titer using peptide based assay: 1:312500. Western Blot: Suggested dilution at 1 µg/mL in 5 % skim milk / PBS buffer, and HRP conjugated anti-Rabbit IgG should be diluted in 1:50000 - 100000 as second antibody.
Comment:	Target Species of Antibody: Human
Restrictions:	For Research Use only

Handling

Format:	Lyophilized
Reconstitution:	Distilled Water.
Concentration:	Lot specific
Buffer:	Lyophilized from PBS with 2 % sucrose
Handling Advice:	Avoid repeat freeze-thaw cycles.
Storage:	4 °C, -20 °C
Storage Comment:	Long term: -20°C, the use of 50% glycerol is recommended if storing aliquots in -20°C for long term use (up to 1 year) Short term (less than 1 week): 4°C. Avoid freeze-thaw cycles.



Immunohistochemistry

Image 1. Human Small Intestine: Formalin-Fixed, Paraffin-Embedded (FFPE). This image was taken for the unconjugated form of this product. Other forms have not been tested.