

Datasheet for ABIN6755320  
**anti-Ataxin 3 antibody (AA 35-84)**[Go to Product page](#)

## 1 Image

## Overview

Quantity:	100 µL
Target:	Ataxin 3 (ATXN3)
Binding Specificity:	AA 35-84
Reactivity:	Human, Mouse, Rat, Sheep, Cow, Horse, Monkey, Pig
Host:	Rabbit
Clonality:	Polyclonal
Conjugate:	This Ataxin 3 antibody is un-conjugated
Application:	Western Blotting (WB), Immunohistochemistry (IHC), Immunohistochemistry (Paraffin-embedded Sections) (IHC (p))

## Product Details

Brand:	IHC-plus™
Immunogen:	Synthetic peptide located between aa35-84 of human ATXN3 (P54252, NP_004984). Percent identity by BLAST analysis: Human, Chimpanzee, Gibbon, Galago, Marmoset, Mouse, Rat, Sheep, Bovine, Horse, Pig, Platypus (100%), Xenopus, Stickleback, Zebrafish (92%), Monkey, Turkey, Zebra finch, Chicken (85%).  Type of Immunogen: Synthetic peptide
Specificity:	Human ATXN3 / Ataxin-3
Purification:	Immunoaffinity purified

## Target Details

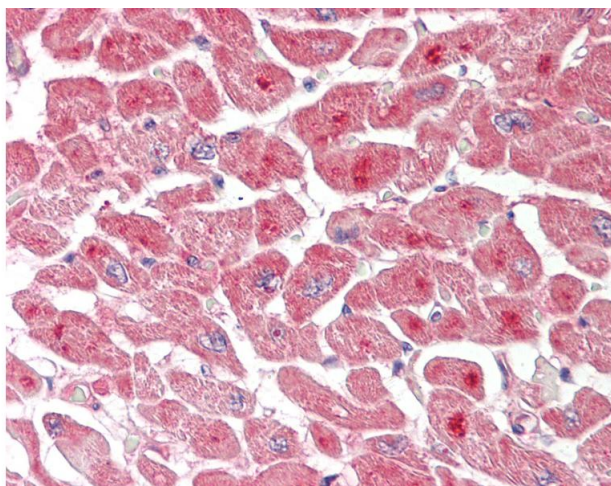
Target:	Ataxin 3 (ATXN3)
Alternative Name:	ATXN3 / JOS ( <a href="#">ATXN3 Products</a> )
Background:	Name/Gene ID: ATXN3  Synonyms: ATXN3, ATX3, Ataxin 3, Ataxin 3 variant h, AT3, Ataxin 3 variant m, Ataxin 3 variant ref, Ataxin-3, Olivopontocerebellar ataxia 3, SCA3, MJD1, JOS, Josephin, MJD
Gene ID:	4287
NCBI Accession:	<a href="#">NP_004984</a>

## Application Details

Application Notes:	Approved: IHC, IHC-P (10 µg/mL), WB (0.2 - 1 µg/mL)  Usage: Western Blot: Suggested dilution at 1 µg/mL in 5 % skim milk / PBS buffer, and HRP conjugated anti-Rabbit IgG should be diluted in 1: 50,000 - 100,000 as secondary antibody.
Comment:	Target Species of Antibody: Human
Restrictions:	For Research Use only

## Handling

Format:	Lyophilized
Reconstitution:	Distilled water
Concentration:	Lot specific
Buffer:	Lyophilized from PBS with 2 % sucrose
Handling Advice:	Avoid repeat freeze-thaw cycles.
Storage:	4 °C, -20 °C
Storage Comment:	Long term: -20°C, the use of 50% glycerol is recommended if storing aliquots in -20°C for long term use (up to 1 year)  Short term (less than 1 week): 4°C. Avoid freeze-thaw cycles.



#### Immunohistochemistry

**Image 1.** Human Heart: Formalin-Fixed, Paraffin-Embedded (FFPE). This image was taken for the unconjugated form of this product. Other forms have not been tested.