



Datasheet for ABIN6755321
anti-PPP3CA antibody (AA 432-481)



[Go to Product page](#)

1 Image

Overview

Quantity:	100 µL
Target:	PPP3CA
Binding Specificity:	AA 432-481
Reactivity:	Human, Mouse, Rat, Dog, Cow, Rabbit, Horse, Pig, Chicken, Xenopus laevis, Monkey, Guinea Pig, Bat
Host:	Rabbit
Clonality:	Polyclonal
Conjugate:	This PPP3CA antibody is un-conjugated
Application:	Western Blotting (WB), Immunohistochemistry (IHC), Immunohistochemistry (Paraffin-embedded Sections) (IHC (p))

Product Details

Brand:	IHC-plus™
Immunogen:	Synthetic peptide located between aa432-481 of human PPP3CA (Q08209, NP_000935). Percent identity by BLAST analysis: Human, Chimpanzee, Gorilla, Orangutan, Gibbon, Galago, Marmoset, Mouse, Rat, Elephant, Panda, Dog, Bovine, Bat, Rabbit, Horse, Pig, Opossum, Guinea pig, Turkey, Zebra finch, Chicken, Platypus, Xenopus, Stickleback (100%), Zebrafish (90%). Type of Immunogen: Synthetic peptide
Specificity:	Human PPP3CA / Calcineurin A
Purification:	Immunoaffinity purified

Target Details

Target:	PPP3CA
Alternative Name:	PPP3CA / CCN1 / Calcineurin A (PPP3CA Products)
Background:	Name/Gene ID: PPP3CA Subfamily: PP2B Family: Protein Phosphatase Synonyms: PPP3CA, Calcineurin A, CALN, CALNA, CALNA1, CNA1, PPP2B, Calcineurin A alpha, CAM-PRP catalytic subunit, CCN1, CNA, CNA alpha, pp2b-alpha
Gene ID:	5530
NCBI Accession:	NP_000935
Pathways:	RTK Signaling , WNT Signaling , Fc-epsilon Receptor Signaling Pathway , Negative Regulation of Hormone Secretion , Carbohydrate Homeostasis , Synaptic Membrane , Skeletal Muscle Fiber Development , Protein targeting to Nucleus , VEGF Signaling , BCR Signaling

Application Details

Application Notes:	Approved: IHC, IHC-P (10 µg/mL), WB (0.2 - 1 µg/mL) Usage: Western Blot: Suggested dilution at 1 µg/mL in 5 % skim milk / PBS buffer, and HRP conjugated anti-Rabbit IgG should be diluted in 1: 50,000 - 100,000 as secondary antibody.
Comment:	Target Species of Antibody: Human
Restrictions:	For Research Use only

Handling

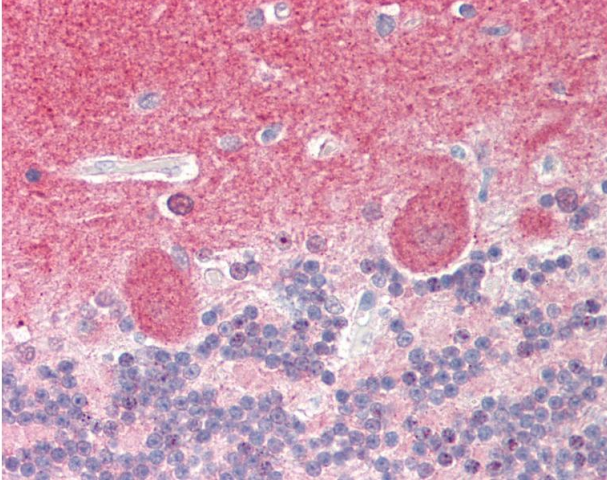
Format:	Lyophilized
Reconstitution:	Distilled water
Concentration:	Lot specific
Buffer:	Lyophilized from PBS with 2 % sucrose
Handling Advice:	Avoid repeat freeze-thaw cycles.
Storage:	4 °C,-20 °C
Storage Comment:	Long term: -20°C, the use of 50% glycerol is recommended if storing aliquots in -20°C for long

Handling

term use (up to 1 year)

Short term (less than 1 week): 4°C. Avoid freeze-thaw cycles.

Images



Immunohistochemistry

Image 1. Human Brain, Cerebellum: Formalin-Fixed, Paraffin-Embedded (FFPE). This image was taken for the unconjugated form of this product. Other forms have not been tested.