



[Go to Product page](#)

Datasheet for ABIN6755322

anti-ABAT antibody (AA 290-339)

1 Image

Overview

Quantity:	100 µL
Target:	ABAT
Binding Specificity:	AA 290-339
Reactivity:	Human, Mouse, Rat, Cow, Dog, Rabbit, Goat, Guinea Pig, Zebrafish (Danio rerio), Pig, Xenopus laevis, Bat, Chicken, Monkey
Host:	Rabbit
Clonality:	Polyclonal
Conjugate:	This ABAT antibody is un-conjugated
Application:	Western Blotting (WB), Immunohistochemistry (IHC), Immunohistochemistry (Paraffin-embedded Sections) (IHC (p))

Product Details

Brand:	IHC-plus™
Immunogen:	Synthetic peptide located between aa290-339 of human ABAT (P80404, NP_065737). Percent identity by BLAST analysis: Human, Chimpanzee, Gorilla, Orangutan, Gibbon, Marmoset, Mouse, Rat, Goat, Elephant, Dog, Bovine, Bat, Rabbit, Pig, Opossum, Guinea pig, Turkey, Zebra finch, Chicken, Platypus, Xenopus (100%), Horse (92%), Salmon, Stickleback, Zebrafish (85%). Type of Immunogen: Synthetic peptide
Isotype:	IgG
Specificity:	Human ABAT

Product Details

Purification: Immunoaffinity purified

Target Details

Target: ABAT

Alternative Name: ABAT ([ABAT Products](#))

Background: Name/Gene ID: ABAT

Synonyms: ABAT, 4-aminobutyrate transaminase, GABA aminotransferase, L-AIBAT, GABA transaminase, NPD009, GABA transferase, GABA-AT, GABA-T, GABAT

Gene ID: 18

NCBI Accession: [NP_065737](#)

Pathways: [Monocarboxylic Acid Catabolic Process](#)

Application Details

Application Notes: Approved: IHC, IHC-P (10 µg/mL), WB

Usage: ELISA titer using peptide based assay: 1:12500. Western Blot: Suggested dilution at 1 µg/mL in 5 % skim milk / PBS buffer, and HRP conjugated anti-Rabbit IgG should be diluted in 1:50000 - 100000 as second antibody.

Comment: Target Species of Antibody: Human

Restrictions: For Research Use only

Handling

Format: Lyophilized

Reconstitution: Distilled Water.

Concentration: Lot specific

Buffer: Lyophilized from PBS with 2 % sucrose

Handling Advice: Avoid repeat freeze-thaw cycles.

Storage: 4 °C, -20 °C

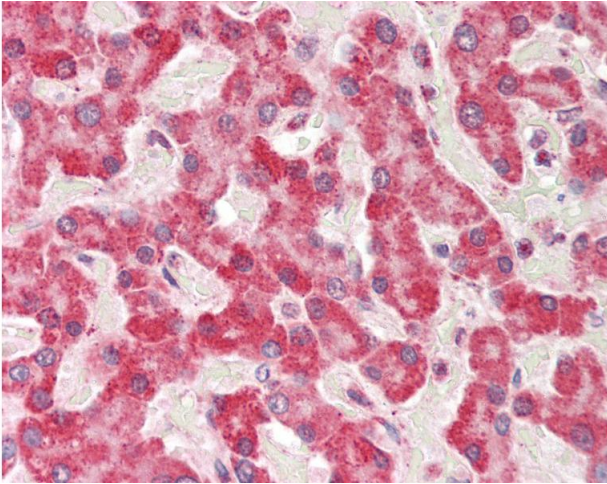
Storage Comment: Long term: -20°C, the use of 50% glycerol is recommended if storing aliquots in -20°C for long

Handling

term use (up to 1 year)

Short term (less than 1 week): 4°C. Avoid freeze-thaw cycles.

Images



Immunohistochemistry

Image 1. Human Liver: Formalin-Fixed, Paraffin-Embedded (FFPE). This image was taken for the unconjugated form of this product. Other forms have not been tested.