

Datasheet for ABIN6755324  
**anti-NET1 antibody (AA 288-337)**[Go to Product page](#)

## 1 Image

## Overview

Quantity:	100 µL
Target:	NET1
Binding Specificity:	AA 288-337
Reactivity:	Human, Mouse, Cow, Zebrafish (Danio rerio), Monkey
Host:	Rabbit
Clonality:	Polyclonal
Conjugate:	This NET1 antibody is un-conjugated
Application:	Western Blotting (WB), Immunohistochemistry (IHC), Immunohistochemistry (Paraffin-embedded Sections) (IHC (p))

## Product Details

Brand:	IHC-plus™
Immunogen:	Synthetic peptide located between aa288-337 of human NET1 (Q5SQI7, NP_005854). Percent identity by BLAST analysis: Human, Chimpanzee, Gorilla, Gibbon, Monkey, Marmoset, Elephant, Platypus (100%), Orangutan, Galago, Rat, Hamster, Panda, Dog, Bat, Rabbit, Horse, Guinea pig, Turkey, Zebra finch, Chicken (92%), Mouse, Bovine, Opossum (85%).  Type of Immunogen: Synthetic peptide
Isotype:	IgG
Specificity:	Human NET1
Purification:	Immunoaffinity purified

## Target Details

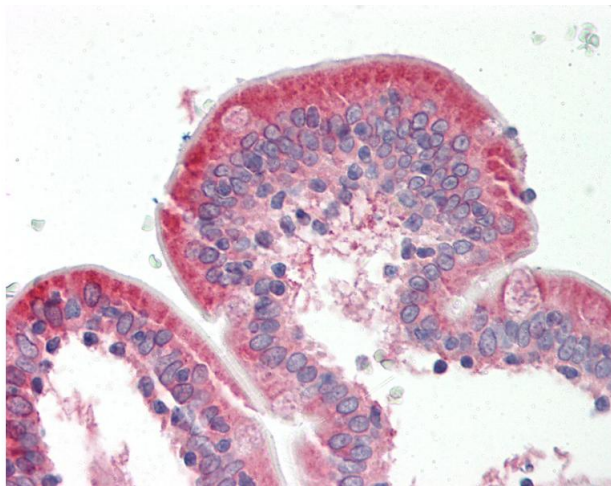
Target:	NET1
Alternative Name:	NET1 ( <a href="#">NET1 Products</a> )
Background:	Name/Gene ID: NET1  Synonyms: NET1, ARHGEF8, NET1A, Proto-oncogene p65 Net1
Gene ID:	10276
NCBI Accession:	<a href="#">NP_005854</a>
Pathways:	<a href="#">Neurotrophin Signaling Pathway</a>

## Application Details

Application Notes:	Approved: IHC, IHC-P (10 µg/mL), WB (0.2 - 1 µg/mL)  Usage: Western Blot: Suggested dilution at 1 µg/mL in 5 % skim milk / PBS buffer, and HRP conjugated anti-Rabbit IgG should be diluted in 1: 50,000 - 100,000 as second antibody. ELISA titer in peptide based assay: 1:312500.
Comment:	Target Species of Antibody: Human
Restrictions:	For Research Use only

## Handling

Format:	Lyophilized
Reconstitution:	Distilled water
Concentration:	Lot specific
Buffer:	Lyophilized from PBS with 2 % sucrose
Handling Advice:	Avoid repeat freeze-thaw cycles.
Storage:	4 °C, -20 °C
Storage Comment:	Long term: -20°C, the use of 50% glycerol is recommended if storing aliquots in -20°C for long term use (up to 1 year)  Short term (less than 1 week): 4°C. Avoid freeze-thaw cycles.



#### Immunohistochemistry

**Image 1.** Human Small Intestine: Formalin-Fixed, Paraffin-Embedded (FFPE). This image was taken for the unconjugated form of this product. Other forms have not been tested.