



[Go to Product page](#)

Datasheet for ABIN6755327

## anti-ARHGAP1 antibody (N-Term)

### 1 Image

#### Overview

Quantity:	100 µL
Target:	ARHGAP1
Binding Specificity:	N-Term
Reactivity:	Human, Mouse, Rat, Cow, Guinea Pig, Rabbit, Monkey, Bat, Hamster
Host:	Rabbit
Clonality:	Polyclonal
Conjugate:	This ARHGAP1 antibody is un-conjugated
Application:	Western Blotting (WB), Immunohistochemistry (IHC), Immunohistochemistry (Paraffin-embedded Sections) (IHC (p))

#### Product Details

Brand:	IHC-plus™
Immunogen:	Synthetic peptide from N-Terminus of human ARHGAP1 (Q07960, NP_004299). Percent identity by BLAST analysis: Human, Chimpanzee, Orangutan, Gibbon, Monkey, Galago, Marmoset, Mouse, Rat, Hamster, Elephant, Bovine, Bat, Guinea pig (100%), Gorilla, Dog, Horse, Pig, Turkey, Chicken (92%), Panda, Rabbit (85%).  Type of Immunogen: Synthetic peptide
Specificity:	Human ARHGAP1
Purification:	Immunoaffinity purified

## Target Details

---

Target:	ARHGAP1
Alternative Name:	ARHGAP1 / CDC42GAP ( <a href="#">ARHGAP1 Products</a> )
Background:	Name/Gene ID: ARHGAP1  Synonyms: ARHGAP1, CDC42GAP, p50-RhoGAP, RHOGAP1, p50rhoGAP, RHOGAP
Gene ID:	392
NCBI Accession:	<a href="#">NP_004299</a>

## Application Details

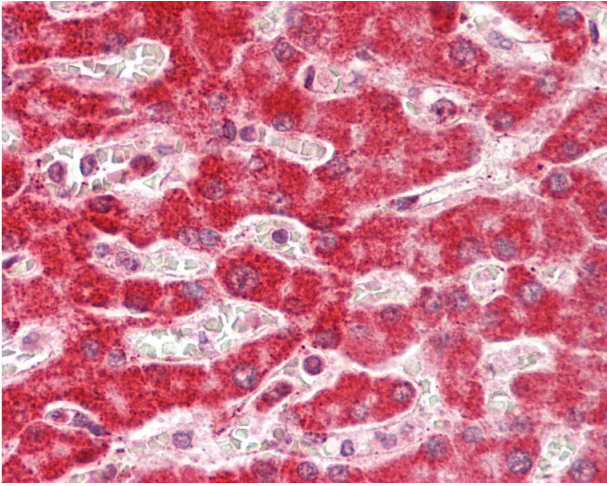
---

Application Notes:	Approved: IHC, IHC-P (10 µg/mL), WB (0.2 - 1 µg/mL)  Usage: Western Blot: Suggested dilution at 1 µg/mL in 5 % skim milk / PBS buffer, and HRP conjugated anti-Rabbit IgG should be diluted in 1: 50,000 - 100,000 as secondary antibody.
Comment:	Target Species of Antibody: Human
Restrictions:	For Research Use only

## Handling

---

Format:	Lyophilized
Reconstitution:	Distilled water
Concentration:	Lot specific
Buffer:	Lyophilized from PBS with 2 % sucrose
Handling Advice:	Avoid repeat freeze-thaw cycles.
Storage:	4 °C,-20 °C
Storage Comment:	Long term: -20°C, the use of 50% glycerol is recommended if storing aliquots in -20°C for long term use (up to 1 year)  Short term (less than 1 week): 4°C. Avoid freeze-thaw cycles.



### Immunohistochemistry

**Image 1.** Human Liver: Formalin-Fixed, Paraffin-Embedded (FFPE). This image was taken for the unconjugated form of this product. Other forms have not been tested.