

Datasheet for ABIN6755328
anti-HADH antibody (AA 149-198)[Go to Product page](#)

1 Image

Overview

Quantity:	100 µL
Target:	HADH
Binding Specificity:	AA 149-198
Reactivity:	Human, Mouse, Rat, Dog, Pig, Guinea Pig, Rabbit, Monkey, Bat
Host:	Rabbit
Clonality:	Polyclonal
Conjugate:	This HADH antibody is un-conjugated
Application:	Western Blotting (WB), Immunohistochemistry (IHC), Immunohistochemistry (Paraffin-embedded Sections) (IHC (p))

Product Details

Brand:	IHC-plus™
Immunogen:	Synthetic peptide located between aa149-198 of human HADH (Q16836, NP_005318). Percent identity by BLAST analysis: Human, Chimpanzee, Gibbon, Monkey, Galago, Marmoset, Mouse, Rat, Elephant, Panda, Dog, Bat, Rabbit, Pig, Guinea pig (100%), Gorilla, Bovine, Horse, Opossum, Zebra finch, Platypus (92%), Turkey, Chicken, Xenopus (85%). Type of Immunogen: Synthetic peptide
Specificity:	Human HADH / HADHSC
Purification:	Immunoaffinity purified

Target Details

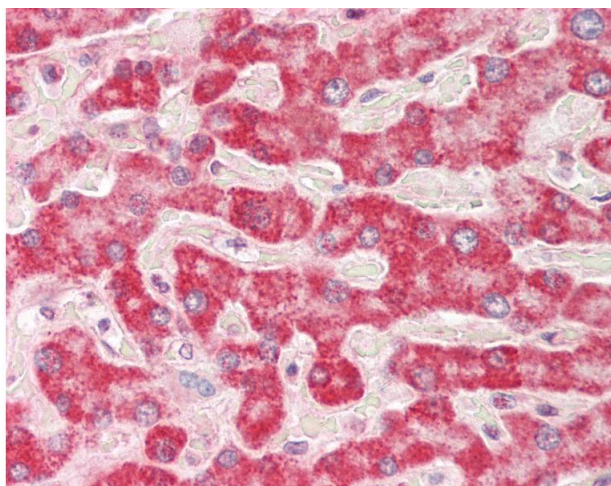
Target:	HADH
Alternative Name:	SCHAD / HADHSC (HADH Products)
Background:	Name/Gene ID: HADH Synonyms: HADH, HAD, HADH1, HCDH, HHF4, SCHAD, HADHSC, Hydroxyacyl-CoA dehydrogenase, MSCHAD
Gene ID:	3033
NCBI Accession:	NP_005318
Pathways:	Negative Regulation of Hormone Secretion , Monocarboxylic Acid Catabolic Process

Application Details

Application Notes:	Approved: IHC, IHC-P (10 µg/mL), WB (0.2 - 1 µg/mL) Usage: Western Blot: Suggested dilution at 1 µg/mL in 5 % skim milk / PBS buffer, and HRP conjugated anti-Rabbit IgG should be diluted in 1: 50,000 - 100,000 as secondary antibody.
Comment:	Target Species of Antibody: Human
Restrictions:	For Research Use only

Handling

Format:	Lyophilized
Reconstitution:	Distilled water
Concentration:	Lot specific
Buffer:	Lyophilized from PBS with 2 % sucrose
Handling Advice:	Avoid repeat freeze-thaw cycles.
Storage:	4 °C, -20 °C
Storage Comment:	Long term: -20°C, the use of 50% glycerol is recommended if storing aliquots in -20°C for long term use (up to 1 year) Short term (less than 1 week): 4°C. Avoid freeze-thaw cycles.



Immunohistochemistry

Image 1. Human Liver: Formalin-Fixed, Paraffin-Embedded (FFPE). This image was taken for the unconjugated form of this product. Other forms have not been tested.