

Datasheet for ABIN6755329
anti-ACOT11 antibody (AA 215-264)[Go to Product page](#)

1 Image

Overview

Quantity:	100 µL
Target:	ACOT11
Binding Specificity:	AA 215-264
Reactivity:	Human, Mouse, Rat, Dog, Horse, Cow, Guinea Pig, Rabbit, Monkey, Chicken, Xenopus laevis
Host:	Rabbit
Clonality:	Polyclonal
Conjugate:	This ACOT11 antibody is un-conjugated
Application:	Western Blotting (WB), Immunohistochemistry (IHC), Immunohistochemistry (Paraffin-embedded Sections) (IHC (p))

Product Details

Brand:	IHC-plus™
Immunogen:	<p>Synthetic peptide located between aa215-264 of human ACOT11 (D3DQ50, NP_671517).</p> <p>Percent identity by BLAST analysis: Human, Chimpanzee, Gorilla, Orangutan, Gibbon, Monkey, Galago, Marmoset, Mouse, Rat, Elephant, Panda, Dog, Bovine, Rabbit, Horse, Opossum, Guinea pig, Turkey, Zebra finch, Chicken, Lizard, Xenopus (100%), Bat, Pig, Platypus, Zebrafish, Sea squirt (92%), Medaka (85%).</p> <p>Type of Immunogen: Synthetic peptide</p>
Specificity:	Human ACOT11
Purification:	Immunoaffinity purified

Target Details

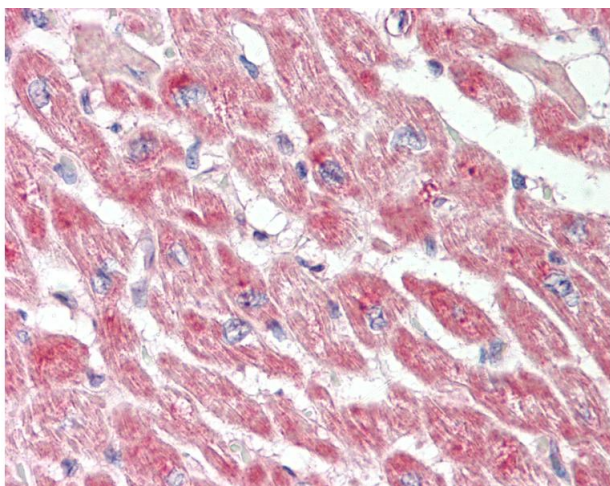
Target:	ACOT11
Alternative Name:	ACOT11 / THEA (ACOT11 Products)
Background:	Name/Gene ID: ACOT11 Synonyms: ACOT11, BFIT2, Acyl-CoA thioesterase 11, KIAA0707, STARD14, THEM1, START domain containing 14, THEA, BFIT, BFIT1
Gene ID:	26027
NCBI Accession:	NP_671517

Application Details

Application Notes:	Approved: IHC, IHC-P (10 µg/mL), WB (0.2 - 1 µg/mL) Usage: Western Blot: Suggested dilution at 1 µg/mL in 5 % skim milk / PBS buffer, and HRP conjugated anti-Rabbit IgG should be diluted in 1: 50,000 - 100,000 as secondary antibody.
Comment:	Target Species of Antibody: Human
Restrictions:	For Research Use only

Handling

Format:	Lyophilized
Reconstitution:	Distilled water
Concentration:	Lot specific
Buffer:	Lyophilized from PBS with 2 % sucrose
Handling Advice:	Avoid repeat freeze-thaw cycles.
Storage:	4 °C, -20 °C
Storage Comment:	Long term: -20°C, the use of 50% glycerol is recommended if storing aliquots in -20°C for long term use (up to 1 year) Short term (less than 1 week): 4°C. Avoid freeze-thaw cycles.



Immunohistochemistry

Image 1. Human Heart: Formalin-Fixed, Paraffin-Embedded (FFPE). This image was taken for the unconjugated form of this product. Other forms have not been tested.