

Datasheet for ABIN6755330  
**anti-MAPK13 antibody (AA 287-336)**[Go to Product page](#)

## 1 Image

## Overview

Quantity:	100 µL
Target:	MAPK13
Binding Specificity:	AA 287-336
Reactivity:	Human, Mouse, Rat, Monkey, Goat, Guinea Pig
Host:	Rabbit
Clonality:	Polyclonal
Conjugate:	This MAPK13 antibody is un-conjugated
Application:	Western Blotting (WB), Immunohistochemistry (IHC), Immunohistochemistry (Paraffin-embedded Sections) (IHC (p))

## Product Details

Brand:	IHC-plus™
Immunogen:	<p>Synthetic peptide located between aa287-336 of human MAPK13 (O15264, NP_002745).</p> <p>Percent identity by BLAST analysis: Human, Chimpanzee, Gorilla, Gibbon, Monkey, Galago, Marmoset, Mouse, Rat, Guinea pig (100%), Sheep, Elephant, Panda, Dog, Bovine, Rabbit, Pig (92%), Bloom alga (91%), Goat, Opossum, Platypus (85%), Bat, Horse, Salmon (84%).</p> <p>Type of Immunogen: Synthetic peptide</p>
Isotype:	IgG
Specificity:	Human MAPK13 / SAPK4
Purification:	Immunoaffinity purified

## Target Details

Target:	MAPK13
Alternative Name:	MAPK13 / p38delta ( <a href="#">MAPK13 Products</a> )
Background:	Name/Gene ID: MAPK13 Subfamily: MAPK Family: Protein Kinase  Synonyms: MAPK13, MAPK-13, MAPK 13, p38delta, PRKM13, SAPK4, Serk 4, MAP kinase 13, MAP kinase p38 delta
Gene ID:	5603
NCBI Accession:	<a href="#">NP_002745</a>
Pathways:	<a href="#">MAPK Signaling</a> , <a href="#">Neurotrophin Signaling Pathway</a> , <a href="#">Hepatitis C</a> , <a href="#">BCR Signaling</a> , <a href="#">S100 Proteins</a>

## Application Details

Application Notes:	Approved: IHC, IHC-P (5 µg/mL), WB (0.2 - 1 µg/mL)  Usage: Western Blot: Suggested dilution at 1 µg/mL in 5 % skim milk / PBS buffer, and HRP conjugated anti-Rabbit IgG should be diluted in 1: 50,000 - 100,000 as second antibody. ELISA titer in peptide based assay: 1:1562500.
Comment:	Target Species of Antibody: Human
Restrictions:	For Research Use only

## Handling

Format:	Lyophilized
Reconstitution:	Distilled water
Concentration:	Lot specific
Buffer:	Lyophilized from PBS with 2 % sucrose
Handling Advice:	Avoid repeat freeze-thaw cycles.
Storage:	4 °C, -20 °C
Storage Comment:	Long term: -20°C, the use of 50% glycerol is recommended if storing aliquots in -20°C for long term use (up to 1 year)

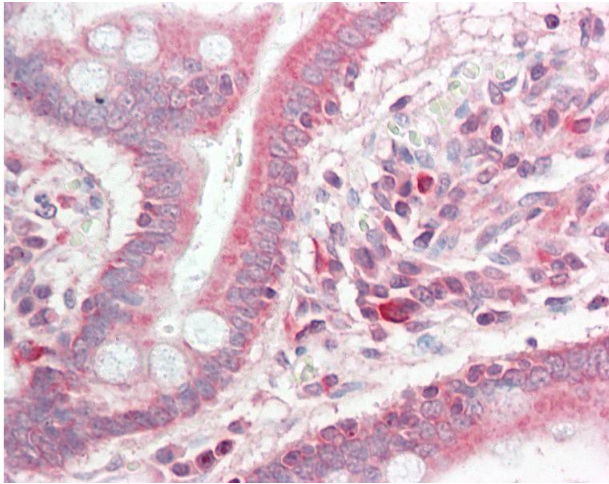
## Handling

---

Short term (less than 1 week): 4°C. Avoid freeze-thaw cycles.

## Images

---



### Immunohistochemistry

**Image 1.** Human Small Intestine: Formalin-Fixed, Paraffin-Embedded (FFPE). This image was taken for the unconjugated form of this product. Other forms have not been tested.