

Datasheet for ABIN6755332
anti-RAD23B antibody (AA 251-300)



[Go to Product page](#)

1 Image

Overview

Quantity:	100 µL
Target:	RAD23B
Binding Specificity:	AA 251-300
Reactivity:	Human, Mouse, Rat, Cow, Dog, Monkey, Guinea Pig, Horse, Rabbit, Zebrafish (Danio rerio), Chicken, Bat, Pig
Host:	Rabbit
Clonality:	Polyclonal
Conjugate:	This RAD23B antibody is un-conjugated
Application:	Western Blotting (WB), Immunohistochemistry (IHC), Immunohistochemistry (Paraffin-embedded Sections) (IHC (p))

Product Details

Brand:	IHC-plus™
Immunogen:	<p>Synthetic peptide located between aa251-300 of human RAD23B (P54727, NP_002865).</p> <p>Percent identity by BLAST analysis: Human, Chimpanzee, Gorilla, Gibbon, Monkey, Galago, Marmoset, Mouse, Rat, Elephant, Dog, Bovine, Bat, Rabbit, Horse, Pig, Opossum, Guinea pig, Turkey, Zebra finch, Chicken, Platypus (100%), Zebrafish (85%), Stickleback (84%).</p> <p>Type of Immunogen: Synthetic peptide</p>
Specificity:	Human RAD23B
Purification:	Immunoaffinity purified

Target Details

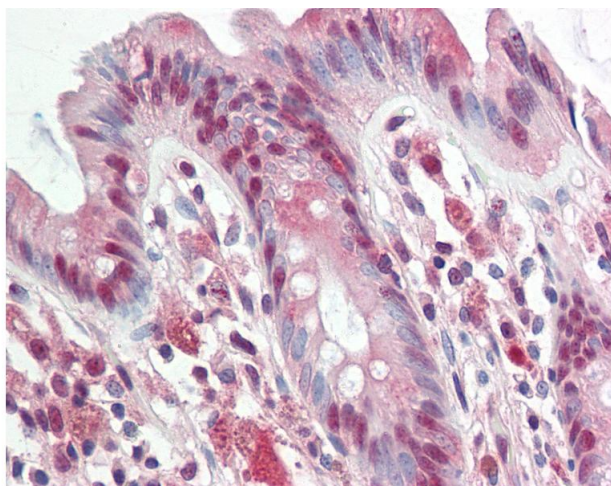
Target:	RAD23B
Alternative Name:	RAD23B / HR23B (RAD23B Products)
Background:	Name/Gene ID: RAD23B Synonyms: RAD23B, HR23B, p58, RAD23, yeast homolog of, B, HHR23B
Gene ID:	5887
NCBI Accession:	NP_002865
Pathways:	DNA Damage Repair

Application Details

Application Notes:	Approved: IHC, IHC-P (10 µg/mL), WB (0.2 - 1 µg/mL) Usage: Western Blot: Suggested dilution at 1 µg/mL in 5 % skim milk / PBS buffer, and HRP conjugated anti-Rabbit IgG should be diluted in 1: 50,000 - 100,000 as secondary antibody.
Comment:	Target Species of Antibody: Human
Restrictions:	For Research Use only

Handling

Format:	Lyophilized
Reconstitution:	Distilled water
Concentration:	Lot specific
Buffer:	Lyophilized from PBS with 2 % sucrose
Handling Advice:	Avoid repeat freeze-thaw cycles.
Storage:	4 °C, -20 °C
Storage Comment:	Long term: -20°C, the use of 50% glycerol is recommended if storing aliquots in -20°C for long term use (up to 1 year) Short term (less than 1 week): 4°C. Avoid freeze-thaw cycles.



Immunohistochemistry

Image 1. Human Colon: Formalin-Fixed, Paraffin-Embedded (FFPE). This image was taken for the unconjugated form of this product. Other forms have not been tested.