

Datasheet for ABIN6755339

anti-PRKACA/PRKACB antibody (N-Term)



[Go to Product page](#)

1 Image

Overview

Quantity:	100 µL
Target:	PRKACA/PRKACB
Binding Specificity:	N-Term
Reactivity:	Human, Mouse, Rat, Cow, Dog, Pig, Sheep, Horse, Monkey, Rabbit, Xenopus laevis, Zebrafish (Danio rerio), Bat, Guinea Pig
Host:	Rabbit
Clonality:	Polyclonal
Conjugate:	This PRKACA/PRKACB antibody is un-conjugated
Application:	Western Blotting (WB), Immunohistochemistry (IHC), Immunohistochemistry (Paraffin-embedded Sections) (IHC (p))

Product Details

Brand:	IHC-plus™
Immunogen:	Synthetic peptide from N-Terminus of human PRKACA (D4ACM4, NP_997401). Percent identity by BLAST analysis: Human, Chimpanzee, Gorilla, Orangutan, Gibbon, Monkey, Galago, Marmoset, Mouse, Rat, Sheep, Elephant, Panda, Dog, Bovine, Bat, Rabbit, Horse, Pig, Guinea pig, Lizard, Xenopus, Catfish, Zebrafish (100%), Hamster, Opossum, Turkey, Zebra finch, Chicken, Platypus, Trout, Salmon (92%). Type of Immunogen: Synthetic peptide
Specificity:	Human PRKACA

Product Details

Purification: Immunoaffinity purified

Target Details

Target: PRKACA/PRKACB

Alternative Name: PRKACA + PRKACB ([PRKACA/PRKACB Products](#))

Background: Name/Gene ID: PRKACA
Subfamily: cAMP
Family: Protein Kinase

Synonyms: PRKACA, PKA C-alpha, Pka calpha, PKACA

This antibody detects: PRKACA + PRKACB

Gene ID: 5566

NCBI Accession: [NP_997401](#)

Application Details

Application Notes: Approved: IHC, IHC-P (10 µg/mL), WB (0.2 - 1 µg/mL)

Usage: Western Blot: Suggested dilution at 1 µg/mL in 5 % skim milk / PBS buffer, and HRP conjugated anti-Rabbit IgG should be diluted in 1: 50,000 - 100,000 as secondary antibody.

Comment: Target Species of Antibody: Human

Restrictions: For Research Use only

Handling

Format: Lyophilized

Reconstitution: Distilled water

Concentration: Lot specific

Buffer: Lyophilized from PBS with 2 % sucrose

Handling Advice: Avoid repeat freeze-thaw cycles.

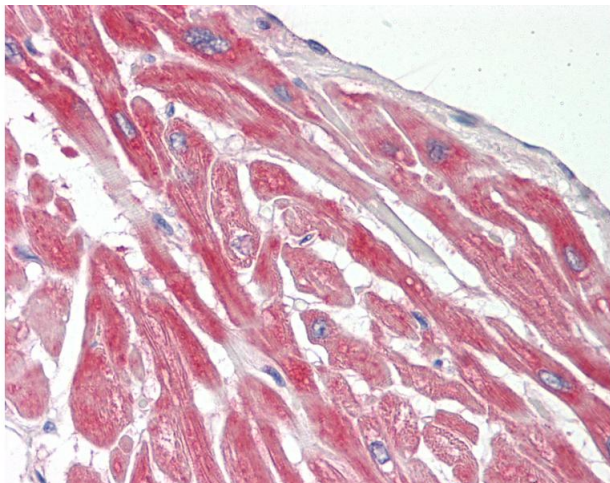
Storage: 4 °C, -20 °C

Handling

Storage Comment: Long term: -20°C, the use of 50% glycerol is recommended if storing aliquots in -20°C for long term use (up to 1 year)

Short term (less than 1 week): 4°C. Avoid freeze-thaw cycles.

Images



Immunohistochemistry

Image 1. Human Heart: Formalin-Fixed, Paraffin-Embedded (FFPE). This image was taken for the unconjugated form of this product. Other forms have not been tested.