



[Go to Product page](#)

Datasheet for ABIN6755341
anti-IVD antibody (AA 62-111)

1 Image

Overview

Quantity:	100 µL
Target:	IVD
Binding Specificity:	AA 62-111
Reactivity:	Human, Mouse, Rat, Dog, Guinea Pig, Horse, Cow, Pig
Host:	Rabbit
Clonality:	Polyclonal
Conjugate:	This IVD antibody is un-conjugated
Application:	Western Blotting (WB), Immunohistochemistry (IHC), Immunohistochemistry (Paraffin-embedded Sections) (IHC (p))

Product Details

Brand:	IHC-plus™
Immunogen:	Synthetic peptide located between aa62-111 of human IVD (P26440). Percent identity by BLAST analysis: Human, Gorilla, Orangutan, Galago, Marmoset (100%), Chimpanzee, Gibbon, Monkey, Elephant, Bat, Rabbit (92%), Rat, Hamster, Bovine, Pig, Guinea pig (85%), Platypus, Lizard (84%), Mouse (78%). Type of Immunogen: Synthetic peptide
Specificity:	Human IVD
Purification:	Immunoaffinity purified

Target Details

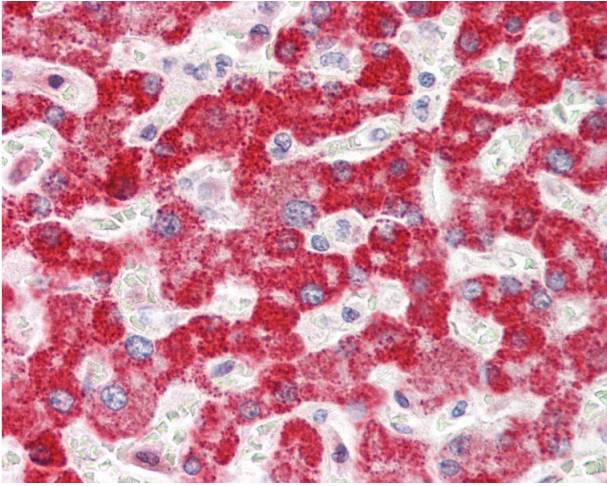
Target:	IVD
Alternative Name:	IVD (IVD Products)
Background:	Name/Gene ID: IVD Synonyms: IVD, ACAD2, Isovaleryl CoA dehydrogenase, Isovaleryl-CoA dehydrogenase
Gene ID:	3712
Pathways:	Monocarboxylic Acid Catabolic Process

Application Details

Application Notes:	Approved: IHC, IHC-P (10 µg/mL), WB
Comment:	Target Species of Antibody: Human
Restrictions:	For Research Use only

Handling

Format:	Lyophilized
Reconstitution:	Distilled water
Concentration:	Lot specific
Buffer:	Lyophilized from PBS
Handling Advice:	Avoid repeat freeze-thaw cycles.
Storage:	4 °C,-20 °C
Storage Comment:	Long term: -20°C, the use of 50% glycerol is recommended if storing aliquots in -20°C for long term use (up to 1 year) Short term (less than 1 week): 4°C. Avoid freeze-thaw cycles.



Immunohistochemistry

Image 1. Human Liver: Formalin-Fixed, Paraffin-Embedded (FFPE). This image was taken for the unconjugated form of this product. Other forms have not been tested.