



Datasheet for ABIN6755350
anti-CYP3A5 antibody (AA 83-132)



[Go to Product page](#)

1 Image

Overview

Quantity:	100 µL
Target:	CYP3A5
Binding Specificity:	AA 83-132
Reactivity:	Human, Mouse, Cow, Monkey
Host:	Rabbit
Clonality:	Polyclonal
Conjugate:	This CYP3A5 antibody is un-conjugated
Application:	Western Blotting (WB), Immunohistochemistry (IHC), Immunohistochemistry (Paraffin-embedded Sections) (IHC (p))

Product Details

Brand:	IHC-plus™
Immunogen:	Synthetic peptide located between aa83-132 of human CYP3A5 (P51589, NP_000768). Percent identity by BLAST analysis: Human, Chimpanzee, Gorilla, Orangutan, Gibbon, Monkey (100%), Pig (92%), Guinea pig (91%), Xenopus (90%), Marmoset, Dog, Horse (85%), Cat, Opossum, Zebra finch (83%), Mouse, Medaka (81%), Rat (78%). Type of Immunogen: Synthetic peptide
Specificity:	Human CYP3A5
Purification:	Immunoaffinity purified

Target Details

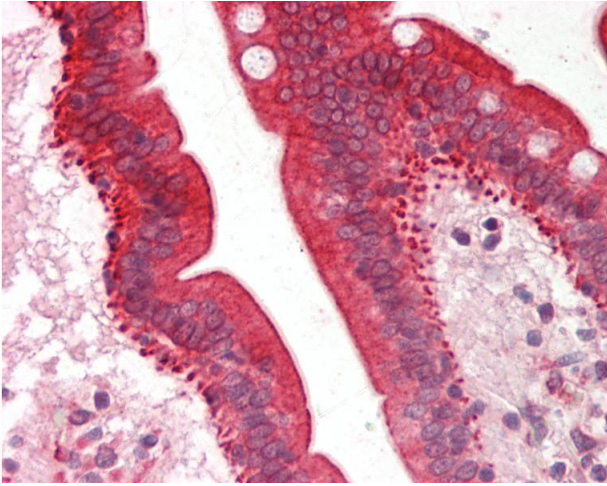
Target:	CYP3A5
Alternative Name:	CYP3A5 (CYP3A5 Products)
Background:	Name/Gene ID: CYP3A5 Family: Cytochrome P450 Synonyms: CYP3A5, Aryl hydrocarbon hydroxylase, CYP11A5, Cytochrome P450 3A5, Cytochrome p450 IIIa5, Cytochrome P450 HLP2, CP35, Cytochrome P450-PCN3, p450PCN3, PCN3
Gene ID:	1577
NCBI Accession:	NP_000768
Pathways:	Steroid Hormone Biosynthesis

Application Details

Application Notes:	Approved: IHC, IHC-P (10 µg/mL), WB (0.2 - 1 µg/mL) Usage: Western Blot: Suggested dilution at 1 µg/mL in 5 % skim milk / PBS buffer, and HRP conjugated anti-Rabbit IgG should be diluted in 1: 50,000 - 100,000 as secondary antibody.
Comment:	Target Species of Antibody: Human
Restrictions:	For Research Use only

Handling

Format:	Lyophilized
Reconstitution:	Distilled water
Concentration:	Lot specific
Buffer:	Lyophilized from PBS with 2 % sucrose
Handling Advice:	Avoid repeat freeze-thaw cycles.
Storage:	4 °C, -20 °C
Storage Comment:	Long term: -20°C, the use of 50% glycerol is recommended if storing aliquots in -20°C for long term use (up to 1 year) Short term (less than 1 week): 4°C. Avoid freeze-thaw cycles.



Immunohistochemistry

Image 1. Human Small Intestine: Formalin-Fixed, Paraffin-Embedded (FFPE). This image was taken for the unconjugated form of this product. Other forms have not been tested.