

Datasheet for ABIN6755354
anti-RPS9 antibody (AA 41-90)[Go to Product page](#)

1 Image

Overview

Quantity:	100 µL
Target:	RPS9
Binding Specificity:	AA 41-90
Reactivity:	Human, Mouse, Rat, Cow, Dog, Guinea Pig, Horse, Rabbit, Pig, Bat, Monkey
Host:	Rabbit
Clonality:	Polyclonal
Conjugate:	This RPS9 antibody is un-conjugated
Application:	Western Blotting (WB), Immunohistochemistry (IHC), Immunohistochemistry (Paraffin-embedded Sections) (IHC (p))

Product Details

Brand:	IHC-plus™
Immunogen:	Synthetic peptide located between aa41-90 of human RPS9 (P46781, NP_001004). Percent identity by BLAST analysis: Human, Chimpanzee, Gorilla, Gibbon, Baboon, Monkey, Galago, Marmoset, Mouse, Rat, Shrew, Elephant, Panda, Dog, Bovine, Bat, Rabbit, Horse, Pig, Guinea pig, Zebra finch, Armadillo, Catfish (100%), Platypus, Xenopus, Salmon, Sablefish, Stickleback, Pike, Zebrafish (92%), Beetle (85%), Rice, Arabidopsis (84%). Type of Immunogen: Synthetic peptide
Specificity:	Human RPS9
Purification:	Immunoaffinity purified

Target Details

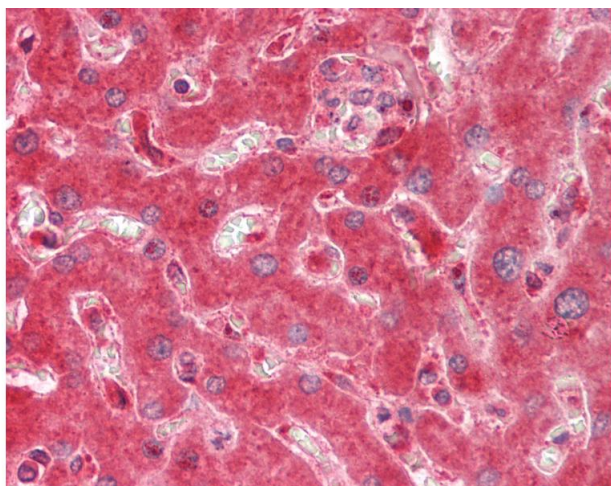
Target:	RPS9
Alternative Name:	RPS9 / S9 (RPS9 Products)
Background:	Name/Gene ID: RPS9 Synonyms: RPS9, 40S ribosomal protein S9, S9, Ribosomal protein S9
Gene ID:	6203
NCBI Accession:	NP_001004

Application Details

Application Notes:	Approved: IHC, IHC-P (10 µg/mL), WB
Comment:	Target Species of Antibody: Human
Restrictions:	For Research Use only

Handling

Format:	Lyophilized
Reconstitution:	Distilled water
Concentration:	Lot specific
Buffer:	Lyophilized from PBS with 2 % sucrose
Handling Advice:	Avoid repeat freeze-thaw cycles.
Storage:	4 °C,-20 °C
Storage Comment:	Long term: -20°C, the use of 50% glycerol is recommended if storing aliquots in -20°C for long term use (up to 1 year) Short term (less than 1 week): 4°C. Avoid freeze-thaw cycles.



Immunohistochemistry

Image 1. Human Liver: Formalin-Fixed, Paraffin-Embedded (FFPE). This image was taken for the unconjugated form of this product. Other forms have not been tested.