



[Go to Product page](#)

Datasheet for ABIN6755367

## anti-Scramblase antibody (AA 121-170)

### 1 Image

#### Overview

Quantity:	100 µL
Target:	Scramblase (SCR1)
Binding Specificity:	AA 121-170
Reactivity:	Human
Host:	Rabbit
Clonality:	Polyclonal
Conjugate:	This Scramblase antibody is un-conjugated
Application:	Western Blotting (WB), Immunohistochemistry (IHC), Immunohistochemistry (Paraffin-embedded Sections) (IHC (p))

#### Product Details

Brand:	IHC-plus™
Immunogen:	Synthetic peptide located between aa121-170 of human PLSCR1 (O15162, NP_066928). Percent identity by BLAST analysis: Human, Chimpanzee (100%).  Type of Immunogen: Synthetic peptide
Specificity:	Human Scramblase / PLSCR1
Purification:	Immunoaffinity purified

#### Target Details

Target:	Scramblase (SCR1)
---------	-------------------

## Target Details

---

Alternative Name: Scramblase / PLSCR1 ([SCR1 Products](#))

---

Background: Name/Gene ID: PLSCR1

Synonyms: PLSCR1, Phospholipid scramblase 1, PL scramblase 1, Scramblase, MMTRA1B

---

Gene ID: 5359

---

NCBI Accession: [NP\\_066928](#)

---

## Application Details

---

Application Notes: Approved: IHC, IHC-P (10 µg/mL), WB (1 µg/mL)

---

Comment: Target Species of Antibody: Human

---

Restrictions: For Research Use only

---

## Handling

---

Format: Lyophilized

---

Reconstitution: Distilled water

---

Concentration: Lot specific

---

Buffer: Lyophilized from PBS buffer with 2 % sucrose

---

Handling Advice: Avoid repeat freeze-thaw cycles.

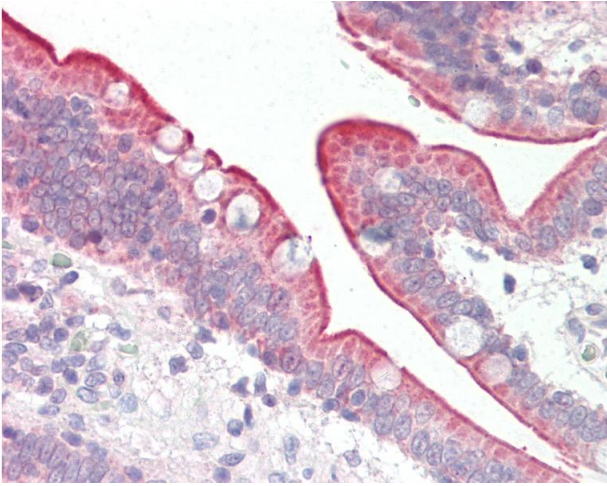
---

Storage: 4 °C, -20 °C

---

Storage Comment: Long term: -20°C, the use of 50% glycerol is recommended if storing aliquots in -20°C for long term use (up to 1 year)

Short term (less than 1 week): 4°C. Avoid freeze-thaw cycles.



### Immunohistochemistry

**Image 1.** Human Small Intestine: Formalin-Fixed, Paraffin-Embedded (FFPE). This image was taken for the unconjugated form of this product. Other forms have not been tested.