



[Go to Product page](#)

Datasheet for ABIN6755368
anti-RNH1 antibody (AA 151-200)

1 Image

Overview

Quantity:	100 µL
Target:	RNH1
Binding Specificity:	AA 151-200
Reactivity:	Human, Rat
Host:	Rabbit
Clonality:	Polyclonal
Conjugate:	This RNH1 antibody is un-conjugated
Application:	Western Blotting (WB), Immunohistochemistry (IHC), Immunohistochemistry (Paraffin-embedded Sections) (IHC (p))

Product Details

Brand:	IHC-plus™
Immunogen:	Synthetic peptide located between aa151-200 of human RNH1 (P13489, NP_976323). Percent identity by BLAST analysis: Human, Rat (100%). Type of Immunogen: Synthetic peptide
Specificity:	Human RNH1
Purification:	Immunoaffinity purified

Target Details

Target:	RNH1
---------	------

Target Details

Alternative Name: RNH1 ([RNH1 Products](#))

Background: Name/Gene ID: RNH1

Synonyms: RNH1, Placental RNase inhibitor, PRI, RAI, Ribonuclease inhibitor, RNH

Gene ID: 6050

NCBI Accession: [NP_976323](#)

Application Details

Application Notes: Approved: IHC, IHC-P (10 µg/mL), WB

Comment: Target Species of Antibody: Human

Restrictions: For Research Use only

Handling

Format: Lyophilized

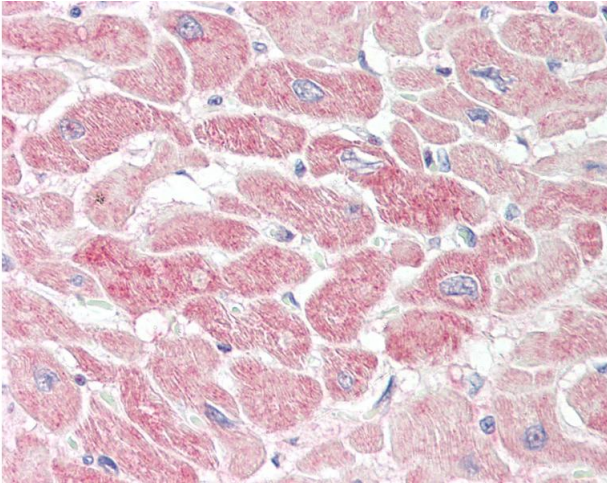
Reconstitution: Distilled water

Concentration: Lot specific

Buffer: Lyophilized from PBS buffer with 2 % sucrose

Storage: 4 °C, -20 °C

Storage Comment: Short term: 4°C
Long term: -20°C.



Immunohistochemistry

Image 1. Human Heart: Formalin-Fixed, Paraffin-Embedded (FFPE). This image was taken for the unconjugated form of this product. Other forms have not been tested.