

Datasheet for ABIN6755379

**anti-Ferredoxin Reductase antibody (AA 254-303)**[Go to Product page](#)**1** Image

## Overview

Quantity:	100 µL
Target:	Ferredoxin Reductase (FDXR)
Binding Specificity:	AA 254-303
Reactivity:	Human, Mouse, Rat, Cow, Horse, Pig
Host:	Rabbit
Clonality:	Polyclonal
Conjugate:	This Ferredoxin Reductase antibody is un-conjugated
Application:	Western Blotting (WB), Immunohistochemistry (IHC), Immunohistochemistry (Paraffin-embedded Sections) (IHC (p))

## Product Details

Brand:	IHC-plus™
Immunogen:	Synthetic peptide located between aa254-303 of human FDXR (P22570, NP_077728). Percent identity by BLAST analysis: Human (100%), Gibbon, Monkey (92%), Gorilla, Marmoset, Mouse, Rat, Elephant, Bovine, Horse, Pig (85%).  Type of Immunogen: Synthetic peptide
Isotype:	IgG
Specificity:	Human FDXR
Purification:	Immunoaffinity purified

## Target Details

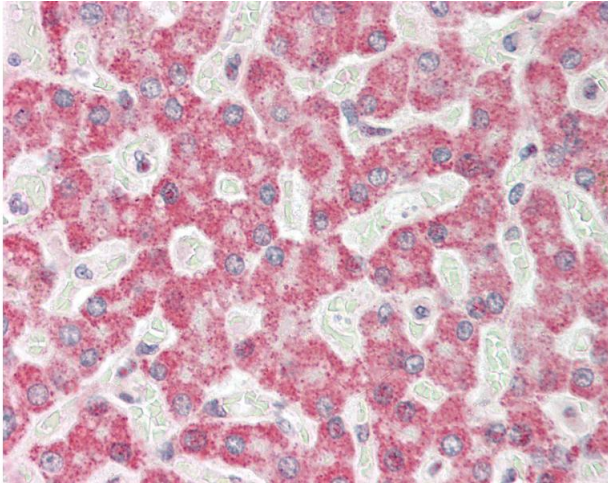
Target:	Ferredoxin Reductase (FDXR)
Alternative Name:	FDXR ( <a href="#">FDXR Products</a> )
Background:	Name/Gene ID: FDXR  Synonyms: FDXR, Adrenodoxin reductase, ADXR, Ferredoxin--NADP(+) reductase, Ferredoxin reductase
Gene ID:	2232
NCBI Accession:	<a href="#">NP_077728</a>

## Application Details

Application Notes:	Approved: IHC, IHC-P (10 µg/mL), WB (0.2 - 1 µg/mL)  Usage: ELISA titer using peptide based assay: 1:12500. Western Blot: Suggested dilution at 1 µg/mL in 5 % skim milk / PBS buffer, and HRP conjugated anti-Rabbit IgG should be diluted in 1:50000 - 100000 as second antibody.
Comment:	Target Species of Antibody: Human
Restrictions:	For Research Use only

## Handling

Format:	Lyophilized
Reconstitution:	Distilled Water.
Concentration:	Lot specific
Buffer:	Lyophilized from PBS with 2 % sucrose
Handling Advice:	Avoid repeat freeze-thaw cycles.
Storage:	4 °C, -20 °C
Storage Comment:	Long term: -20°C, the use of 50% glycerol is recommended if storing aliquots in -20°C for long term use (up to 1 year)  Short term (less than 1 week): 4°C. Avoid freeze-thaw cycles.



#### Immunohistochemistry

**Image 1.** Human Liver: Formalin-Fixed, Paraffin-Embedded (FFPE). This image was taken for the unconjugated form of this product. Other forms have not been tested.