



[Go to Product page](#)

Datasheet for ABIN6755387

## anti-Lipoprotein Lipase antibody (AA 313-362)

### 1 Image

#### Overview

Quantity:	100 µL
Target:	Lipoprotein Lipase (LPL)
Binding Specificity:	AA 313-362
Reactivity:	Human, Goat, Horse, Monkey
Host:	Rabbit
Clonality:	Polyclonal
Conjugate:	This Lipoprotein Lipase antibody is un-conjugated
Application:	Western Blotting (WB), Immunohistochemistry (IHC), Immunohistochemistry (Paraffin-embedded Sections) (IHC (p))

#### Product Details

Brand:	IHC-plus™
Immunogen:	Synthetic peptide located between aa313-362 of human LPL (P06858, NP_000228). Percent identity by BLAST analysis: Human, Chimpanzee, Gorilla, Gibbon, Baboon, Monkey (100%), Galago, Pig (92%), Marmoset, Sheep, Goat, Panda, Bovine, Bat, Rabbit, Horse (85%), Cat (84%).  Type of Immunogen: Synthetic peptide
Specificity:	Human LPL / Lipoprotein Lipase
Purification:	Immunoaffinity purified

## Target Details

---

Target:	Lipoprotein Lipase (LPL)
Alternative Name:	LPL / Lipoprotein Lipase ( <a href="#">LPL Products</a> )
Background:	Name/Gene ID: LPL  Synonyms: LPL, LIPD, Lipoprotein lipase, HDLCQ11
Gene ID:	4023
NCBI Accession:	<a href="#">NP_000228</a>
Pathways:	<a href="#">Lipid Metabolism</a>

## Application Details

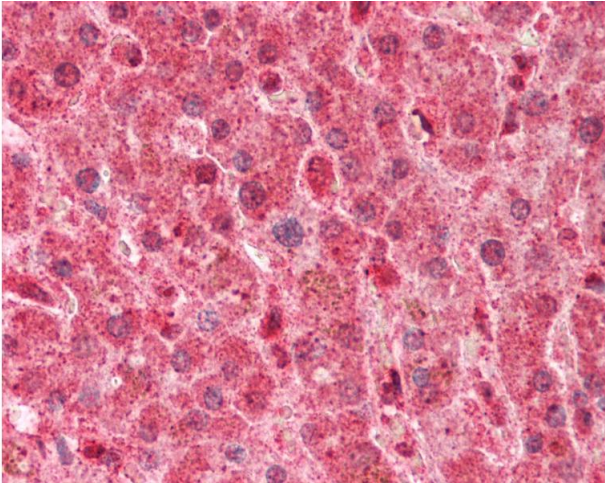
---

Application Notes:	Approved: IHC, IHC-P (10 µg/mL), WB (1 µg/mL)  Usage: Western Blot: Suggested dilution at 1 µg/mL in 5 % skim milk / PBS buffer, and HRP conjugated anti-Rabbit IgG should be diluted in 1: 50,000 - 100,000 as secondary antibody.
Comment:	Target Species of Antibody: Human
Restrictions:	For Research Use only

## Handling

---

Format:	Lyophilized
Reconstitution:	Distilled water
Concentration:	Lot specific
Buffer:	Lyophilized from PBS with 2 % sucrose
Handling Advice:	Avoid repeat freeze-thaw cycles.
Storage:	4 °C, -20 °C
Storage Comment:	Long term: -20°C, the use of 50% glycerol is recommended if storing aliquots in -20°C for long term use (up to 1 year)  Short term (less than 1 week): 4°C. Avoid freeze-thaw cycles.



### Immunohistochemistry

**Image 1.** Human Liver: Formalin-Fixed, Paraffin-Embedded (FFPE). This image was taken for the unconjugated form of this product. Other forms have not been tested.