



[Go to Product page](#)

Datasheet for ABIN6755388
anti-CTAG1B antibody (C-Term)

1 Image

Overview

| | |
|----------------------|--|
| Quantity: | 100 µL |
| Target: | CTAG1B |
| Binding Specificity: | C-Term |
| Reactivity: | Human |
| Host: | Rabbit |
| Clonality: | Polyclonal |
| Conjugate: | This CTAG1B antibody is un-conjugated |
| Application: | Western Blotting (WB), Immunohistochemistry (IHC), Immunohistochemistry (Paraffin-embedded Sections) (IHC (p)) |

Product Details

| | |
|---------------|---|
| Brand: | IHC-plus™ |
| Immunogen: | Synthetic peptide from C-Terminus of human CTAG1B (P78358, NP_001318). Percent identity by BLAST analysis: Human, Gorilla (100%). Type of Immunogen: Synthetic peptide |
| Specificity: | Human CTAG1B / NY-ESO-1 |
| Purification: | Immunoaffinity purified |

Target Details

| | |
|---------|--------|
| Target: | CTAG1B |
|---------|--------|

Target Details

Alternative Name: CTAG1B / NY-ESO-1 ([CTAG1B Products](#))

Background: Name/Gene ID: CTAG1B

Synonyms: CTAG1B, Cancer/testis antigen 1B, Cancer antigen 3, Cancer/testis antigen 1, Cancer/testis antigen 6.1, CTAG, CT6.1, LAGE2A, L antigen family member 2, LAGE-2, LAGE2, NY-ESO-1, CTAG1, ESO1, LAGE2B, CTAG1A

Gene ID: 1485

NCBI Accession: [NP_001318](#)

Application Details

Application Notes: Approved: IHC, IHC-P (10 µg/mL), WB (1 µg/mL)

Usage: Western Blot: Suggested dilution at 1 µg/mL in 5 % skim milk / PBS buffer, and HRP conjugated anti-Rabbit IgG should be diluted in 1: 50,000 - 100,000 as secondary antibody.

Comment: Target Species of Antibody: Human

Restrictions: For Research Use only

Handling

Format: Lyophilized

Reconstitution: Distilled water

Concentration: Lot specific

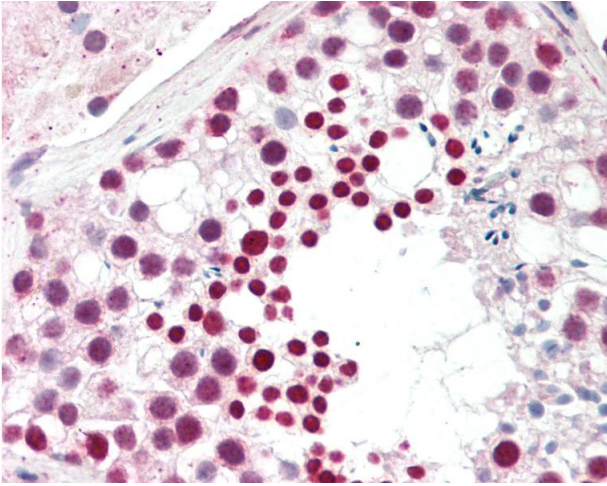
Buffer: Lyophilized from PBS with 2 % sucrose

Handling Advice: Avoid repeat freeze-thaw cycles.

Storage: 4 °C,-20 °C

Storage Comment: Long term: -20°C, the use of 50% glycerol is recommended if storing aliquots in -20°C for long term use (up to 1 year)

Short term (less than 1 week): 4°C. Avoid freeze-thaw cycles.



Immunohistochemistry

Image 1. Human Testis: Formalin-Fixed, Paraffin-Embedded (FFPE). This image was taken for the unconjugated form of this product. Other forms have not been tested.