



[Go to Product page](#)

Datasheet for ABIN6755392  
**anti-CD200 antibody (C-Term)**

1 Image

Overview

Quantity:	100 µL
Target:	CD200
Binding Specificity:	C-Term
Reactivity:	Human, Rabbit, Cow, Horse, Monkey
Host:	Rabbit
Clonality:	Polyclonal
Conjugate:	This CD200 antibody is un-conjugated
Application:	Western Blotting (WB), Immunohistochemistry (IHC), Immunohistochemistry (Paraffin-embedded Sections) (IHC (p))

Product Details

Brand:	IHC-plus™
Immunogen:	Synthetic peptide from C-Terminus of human CD200 (F8W7G1). Percent identity by BLAST analysis: Human, Chimpanzee, Gorilla, Orangutan, Gibbon, Monkey, Marmoset, Panda, Bovine, Rabbit (100%), Mouse, Rat, Hamster, Dog, Bat, Pig (92%), Galago, Elephant (91%), Horse (84%).  Type of Immunogen: Synthetic peptide
Specificity:	Human CD200
Purification:	Immunoaffinity purified

## Target Details

---

Target:	CD200
Alternative Name:	CD200 ( <a href="#">CD200 Products</a> )
Background:	Name/Gene ID: CD200  Synonyms: CD200, CD200 antigen, CD200 Molecule, MOX1, MOX2, OX-2 membrane glycoprotein, OX-2, MRC, MRC OX-2 antigen
Gene ID:	4345

## Application Details

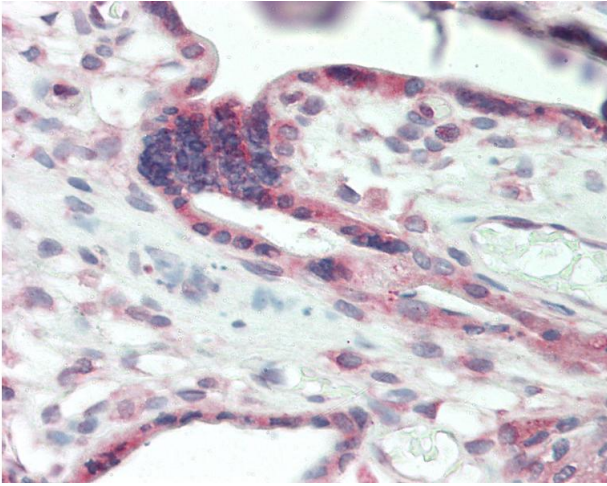
---

Application Notes:	Approved: IHC, IHC-P (10 µg/mL), WB
Comment:	Target Species of Antibody: Human
Restrictions:	For Research Use only

## Handling

---

Format:	Lyophilized
Reconstitution:	Distilled water
Concentration:	Lot specific
Buffer:	Lyophilized from PBS with 2 % sucrose
Handling Advice:	Avoid repeat freeze-thaw cycles.
Storage:	4 °C,-20 °C
Storage Comment:	Long term: -20°C, the use of 50% glycerol is recommended if storing aliquots in -20°C for long term use (up to 1 year) Short term (less than 1 week): 4°C. Avoid freeze-thaw cycles.



### Immunohistochemistry

**Image 1.** Human Placenta: Formalin-Fixed, Paraffin-Embedded (FFPE). This image was taken for the unconjugated form of this product. Other forms have not been tested.