

Datasheet for ABIN6755399
anti-Biglycan antibody (AA 53-166)



[Go to Product page](#)

1 Image

Overview

Quantity:	100 µL
Target:	Biglycan (BGN)
Binding Specificity:	AA 53-166
Reactivity:	Mouse
Host:	Rabbit
Clonality:	Polyclonal
Conjugate:	This Biglycan antibody is un-conjugated
Application:	ELISA

Product Details

Immunogen:	Recombinant BGN (Leu53-Arg166) expressed in E. coli. ImmunogenType: Recombinant protein
Isotype:	IgG
Specificity:	Mouse BGN / Biglycan
Purification:	Affinity purified

Target Details

Target:	Biglycan (BGN)
Alternative Name:	BGN / Biglycan (BGN Products)
Background:	Synonyms: BGN, Bone/cartilage proteoglycan I, Biglycan, Biglycan proteoglycan, DSPG1, PG-S1,

Target Details

Small leucine-rich protein 1A, PGI, Bone/cartilage proteoglycan-I, SLRR1A

Gene ID: 633

Pathways: [Glycosaminoglycan Metabolic Process](#)

Application Details

Application Notes: ELISA (1:100 - 1:200), IHC-P (1:100), WB (1:100 - 1:400),

Restrictions: For Research Use only

Handling

Concentration: Lot specific

Buffer: PBS, pH 7.4, 0.02 % sodium azide, 50 % glycerol.

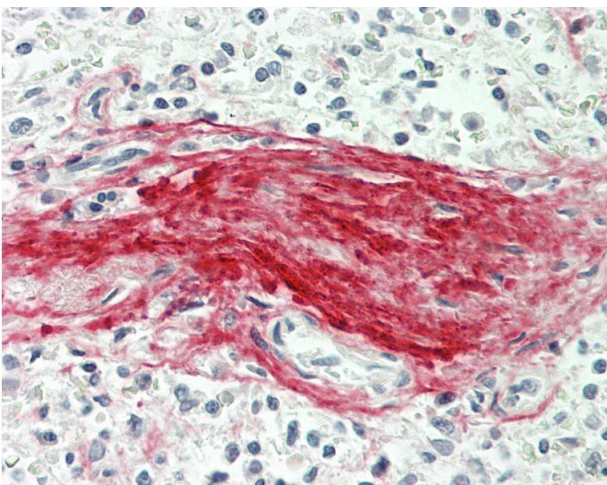
Preservative: Sodium azide

Precaution of Use: This product contains Sodium azide: a POISONOUS AND HAZARDOUS SUBSTANCE which should be handled by trained staff only.

Storage: 4 °C

Storage Comment: Store frozen product at or below -20°C. Thawed product may be stored for 2-4 weeks at 4°C. For optimal storage, aliquot to smaller portions and store at -20°C to -70°C. Avoid repeated freeze/thaw cycles.

Images



Immunohistochemistry

Image 1. Human Spleen, Trabecula: Formalin-Fixed, Paraffin-Embedded (FFPE). This image was taken for the unconjugated form of this product. Other forms have not been tested.