



[Go to Product page](#)

Datasheet for ABIN6755407

anti-TFCP2L1 antibody (AA 181-230)

1 Image

Overview

Quantity:	100 µL
Target:	TFCP2L1
Binding Specificity:	AA 181-230
Reactivity:	Human, Mouse, Rat, Dog, Cow, Rabbit, Guinea Pig, Horse, Chicken, Xenopus laevis, Bat, Monkey, Hamster, Pig
Host:	Rabbit
Clonality:	Polyclonal
Conjugate:	This TFCP2L1 antibody is un-conjugated
Application:	Western Blotting (WB), Immunohistochemistry (IHC), Immunohistochemistry (Paraffin-embedded Sections) (IHC (p))

Product Details

Brand:	IHC-plus™
Immunogen:	Synthetic peptide located between aa181-230 of human TFCP2L1 (Q9NZI6, NP_055368). Percent identity by BLAST analysis: Human, Chimpanzee, Gorilla, Orangutan, Gibbon, Monkey, Galago, Marmoset, Mouse, Rat, Hamster, Elephant, Dog, Bovine, Bat, Rabbit, Horse, Pig, Opossum, Guinea pig, Turkey, Zebra finch, Chicken, Platypus, Lizard, Xenopus (100%), Salmon, Stickleback, Zebrafish (92%), Tamarin (85%). Type of Immunogen: Synthetic peptide
Isotype:	IgG

Product Details

Specificity: Human TFCP2L1 / CRTR1

Purification: Immunoaffinity purified

Target Details

Target: TFCP2L1

Alternative Name: CRTR1 / TFCP2L1 ([TFCP2L1 Products](#))

Background: Name/Gene ID: TFCP2L1

Synonyms: TFCP2L1, CRTR1, LBP-9, CRTR-1, LBP9, Transcription factor LBP-9

Gene ID: 29842

NCBI Accession: [NP_055368](#)

Application Details

Application Notes: Approved: IHC, IHC-P (5 µg/mL), WB (0.2 - 1 µg/mL)

Comment: Target Species of Antibody: Human

Restrictions: For Research Use only

Handling

Format: Lyophilized

Reconstitution: After adding water, will consist of PBS buffer with 2 % sucrose

Concentration: Lot specific

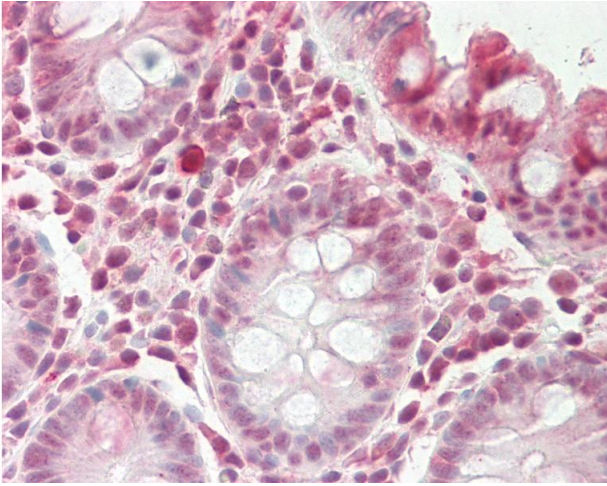
Buffer: Lyophilized from PBS with 2 % sucrose

Handling Advice: Avoid repeat freeze-thaw cycles.

Storage: 4 °C, -20 °C

Storage Comment: Long term: -20°C, the use of 50% glycerol is recommended if storing aliquots in -20°C for long term use (up to 1 year)

Short term (less than 1 week): 4°C. Avoid freeze-thaw cycles.



Immunohistochemistry

Image 1. Human Colon: Formalin-Fixed, Paraffin-Embedded (FFPE). This image was taken for the unconjugated form of this product. Other forms have not been tested.