

Datasheet for ABIN6755410 anti-PPP1R13L antibody (AA 501-550)



[Go to Product page](#)

1 Image

Overview

| | |
|----------------------|--|
| Quantity: | 100 µL |
| Target: | PPP1R13L |
| Binding Specificity: | AA 501-550 |
| Reactivity: | Human, Mouse, Dog, Cow, Horse, Monkey |
| Host: | Rabbit |
| Clonality: | Polyclonal |
| Conjugate: | This PPP1R13L antibody is un-conjugated |
| Application: | Western Blotting (WB), Immunohistochemistry (IHC), Immunohistochemistry (Paraffin-embedded Sections) (IHC (p)) |

Product Details

| | |
|---------------|---|
| Brand: | IHC-plus™ |
| Immunogen: | Synthetic peptide located between aa501-550 of human PPP1R13L (Q8WUF5, NP_006654). Percent identity by BLAST analysis: Human, Chimpanzee, Gibbon, Galago, Marmoset, Mouse, Elephant, Panda, Dog, Bovine, Horse, Opossum (100%), Rat, Rabbit, Guinea pig (92%). Type of Immunogen: Synthetic peptide |
| Isotype: | IgG |
| Specificity: | Human PPP1R13L / IASPP |
| Purification: | Immunoaffinity purified |

Target Details

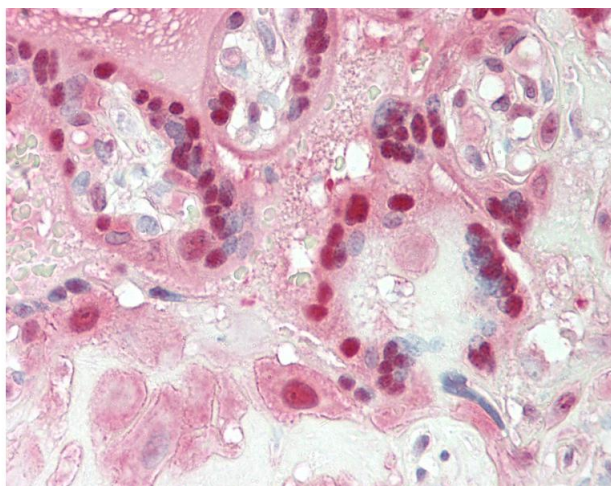
| | |
|-------------------|--|
| Target: | PPP1R13L |
| Alternative Name: | PPP1R13L / iASPP (PPP1R13L Products) |
| Background: | <p>Name/Gene ID: PPP1R13L</p> <p>Synonyms: PPP1R13L, IASPP, Inhibitor of ASPP protein, NFkB-interacting protein 1, NKIP1, RAI4, RAI, Retinoic acid induced 4, NFkB interacting protein 1, PPP1R13BL, Protein iASPP, RelA-associated inhibitor, PPP1R13B-like protein</p> |
| Gene ID: | 10848 |
| NCBI Accession: | NP_006654 |

Application Details

| | |
|--------------------|---|
| Application Notes: | <p>Approved: IHC, IHC-P (10 µg/mL), WB (0.2 - 1 µg/mL)</p> <p>Usage: ELISA titer using peptide based assay: 1:62500. Western Blot: Suggested dilution at 0.25 µg/mL in 5 % skim milk / PBS buffer, and HRP conjugated anti-Rabbit IgG should be diluted in 1:50000 - 100000 as second antibody.</p> |
| Comment: | Target Species of Antibody: Human |
| Restrictions: | For Research Use only |

Handling

| | |
|------------------|--|
| Format: | Lyophilized |
| Reconstitution: | Distilled Water. |
| Concentration: | Lot specific |
| Buffer: | Lyophilized from PBS with 2 % sucrose |
| Handling Advice: | Avoid repeat freeze-thaw cycles. |
| Storage: | 4 °C,-20 °C |
| Storage Comment: | <p>Long term: -20°C, the use of 50% glycerol is recommended if storing aliquots in -20°C for long term use (up to 1 year)</p> <p>Short term (less than 1 week): 4°C. Avoid freeze-thaw cycles.</p> |



Immunohistochemistry

Image 1. Human Placenta: Formalin-Fixed, Paraffin-Embedded (FFPE). This image was taken for the unconjugated form of this product. Other forms have not been tested.