



[Go to Product page](#)

Datasheet for ABIN6755416
anti-PPP1R13L antibody (AA 756-805)

1 Image

Overview

Quantity:	100 µL
Target:	PPP1R13L
Binding Specificity:	AA 756-805
Reactivity:	Human, Mouse, Rat, Dog, Horse, Rabbit
Host:	Rabbit
Clonality:	Polyclonal
Conjugate:	This PPP1R13L antibody is un-conjugated
Application:	Western Blotting (WB), Immunohistochemistry (IHC), Immunohistochemistry (Paraffin-embedded Sections) (IHC (p))

Product Details

Brand:	IHC-plus™
Immunogen:	Synthetic peptide located between aa756-805 of human PPP1R13L (Q8WUF5, NP_006654). Percent identity by BLAST analysis: Human, Chimpanzee, Gibbon, Galago, Mouse, Rat, Panda, Dog, Rabbit, Horse, Opossum (100%), Bovine, Guinea pig (92%), Elephant (85%). Type of Immunogen: Synthetic peptide
Specificity:	Human PPP1R13L / IASPP
Purification:	Immunoaffinity purified

Target Details

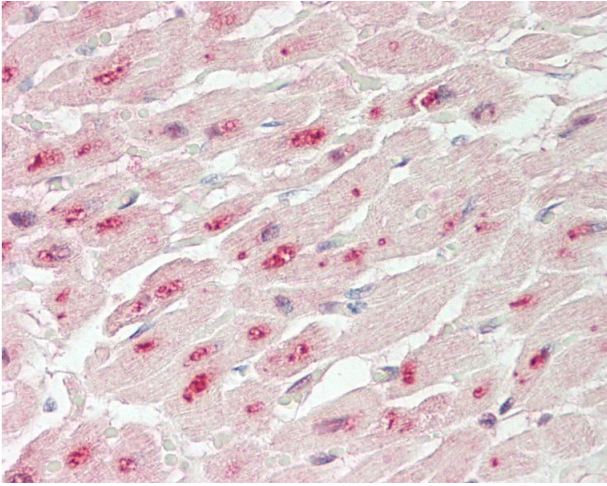
Target:	PPP1R13L
Alternative Name:	PPP1R13L / iASPP (PPP1R13L Products)
Background:	Name/Gene ID: PPP1R13L Synonyms: PPP1R13L, IASPP, Inhibitor of ASPP protein, NFkB-interacting protein 1, NKIP1, RAI4, RAI, Retinoic acid induced 4, NFkB interacting protein 1, PPP1R13BL, Protein iASPP, RelA-associated inhibitor, PPP1R13B-like protein
Gene ID:	10848
NCBI Accession:	NP_006654

Application Details

Application Notes:	Approved: IHC, IHC-P (10 µg/mL), WB (0.2 - 1 µg/mL) Usage: Western Blot: Suggested dilution at 1 µg/mL in 5 % skim milk / PBS buffer, and HRP conjugated anti-Rabbit IgG should be diluted in 1: 50,000 - 100,000 as secondary antibody.
Comment:	Target Species of Antibody: Human
Restrictions:	For Research Use only

Handling

Format:	Lyophilized
Reconstitution:	Distilled water
Concentration:	Lot specific
Buffer:	Lyophilized from PBS with 2 % sucrose
Handling Advice:	Avoid repeat freeze-thaw cycles.
Storage:	4 °C, -20 °C
Storage Comment:	Long term: -20°C, the use of 50% glycerol is recommended if storing aliquots in -20°C for long term use (up to 1 year) Short term (less than 1 week): 4°C. Avoid freeze-thaw cycles.



Immunohistochemistry

Image 1. Human Heart: Formalin-Fixed, Paraffin-Embedded (FFPE). This image was taken for the unconjugated form of this product. Other forms have not been tested.