

Datasheet for ABIN6755421  
**anti-STAU1/Staufen antibody (AA 201-250)**[Go to Product page](#)

## 1 Image

## Overview

Quantity:	100 µL
Target:	STAU1/Staufen (STAU1)
Binding Specificity:	AA 201-250
Reactivity:	Human, Rat, Mouse, Horse, Cow, Guinea Pig, Dog, Rabbit, Bat, Monkey, Chicken, Xenopus laevis
Host:	Rabbit
Clonality:	Polyclonal
Conjugate:	This STAU1/Staufen antibody is un-conjugated
Application:	Western Blotting (WB), Immunohistochemistry (IHC), Immunohistochemistry (Paraffin-embedded Sections) (IHC (p))

## Product Details

Brand:	IHC-plus™
Immunogen:	Synthetic peptide located between aa201-250 of human STAU1 (O95793). Percent identity by BLAST analysis: Human, Chimpanzee, Gorilla, Orangutan, Gibbon, Marmoset, Mouse, Rat, Elephant, Panda, Dog, Bovine, Bat, Rabbit, Horse, Opossum, Guinea pig, Turkey, Zebra finch, Chicken, Platypus, Lizard, Xenopus (100%), Salmon, Stickleback, Zebrafish (92%).  Type of Immunogen: Synthetic peptide
Isotype:	IgG
Specificity:	Human STAU1 / Staufen
Purification:	Immunoaffinity purified

## Target Details

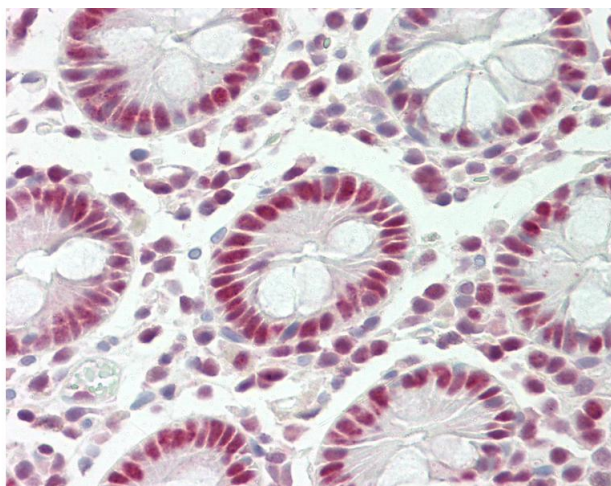
Target:	STAU1/Staufen (STAU1)
Alternative Name:	STAU1 / Staufen ( <a href="#">STAU1 Products</a> )
Background:	Name/Gene ID: STAU1  Synonyms: STAU1, Staufen, STAU
Gene ID:	6780
Pathways:	<a href="#">Asymmetric Protein Localization</a>

## Application Details

Application Notes:	Approved: IHC, IHC-P (10 µg/mL), WB (0.2 - 1 µg/mL)  Usage: ELISA titer using peptide based assay: 1:62500. Western Blot: Suggested dilution at 0.5 µg/mL in 5 % skim milk / PBS buffer, and HRP conjugated anti-Rabbit IgG should be diluted in 1:50000 - 100000 as second antibody.
Comment:	Target Species of Antibody: Human
Restrictions:	For Research Use only

## Handling

Format:	Lyophilized
Reconstitution:	Distilled Water.
Concentration:	Lot specific
Buffer:	Lyophilized from PBS with 2 % sucrose
Handling Advice:	Avoid repeat freeze-thaw cycles.
Storage:	4 °C, -20 °C
Storage Comment:	Long term: -20°C, the use of 50% glycerol is recommended if storing aliquots in -20°C for long term use (up to 1 year)  Short term (less than 1 week): 4°C. Avoid freeze-thaw cycles.



#### Immunohistochemistry

**Image 1.** Human Colon: Formalin-Fixed, Paraffin-Embedded (FFPE). This image was taken for the unconjugated form of this product. Other forms have not been tested.