



Datasheet for ABIN6755424
anti-CRH antibody (C-Term)



[Go to Product page](#)

1 Image

Overview

Quantity:	100 µL
Target:	CRH
Binding Specificity:	C-Term
Reactivity:	Human, Rat, Mouse, Dog, Pig, Cow, Rabbit, Chicken, Monkey
Host:	Rabbit
Clonality:	Polyclonal
Conjugate:	This CRH antibody is un-conjugated
Application:	Western Blotting (WB), Immunohistochemistry (IHC), Immunohistochemistry (Paraffin-embedded Sections) (IHC (p))

Product Details

Brand:	IHC-plus™
Immunogen:	Synthetic peptide from C-Terminus of human CRH (P06850, NP_000747). Percent identity by BLAST analysis: Human, Chimpanzee, Gorilla, Orangutan, Gibbon, Monkey, Galago, Marmoset, Mouse, Rat, Elephant, Dog, Pig, Opossum, Zebra finch, Chicken, Lizard (100%), Sheep, Guinea pig, Platypus, Xenopus, Frog, Trout, Salmon, Smelt, Zebrafish (92%), Bovine, Bat, Seabass (84%), Stickleback, Pufferfish (83%). Type of Immunogen: Synthetic peptide
Specificity:	Human CRH / CRF
Purification:	Immunoaffinity purified

Target Details

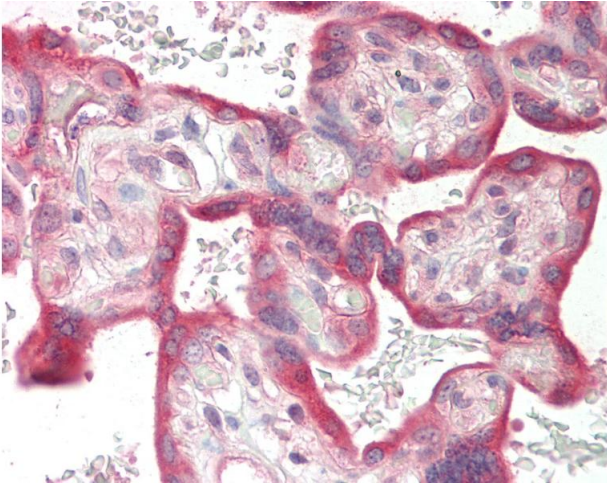
Target:	CRH
Alternative Name:	CRH / CRF (CRH Products)
Background:	Name/Gene ID: CRH Family: Hormone Synonyms: CRH, CRF, Corticoliberin, Corticotropin-releasing factor
Gene ID:	1392
NCBI Accession:	NP_000747
Pathways:	Positive Regulation of Peptide Hormone Secretion , Hormone Activity , Negative Regulation of Hormone Secretion , cAMP Metabolic Process , Myometrial Relaxation and Contraction , Feeding Behaviour

Application Details

Application Notes:	Approved: IHC, IHC-P (10 µg/mL), WB (1 µg/mL)
Comment:	Target Species of Antibody: Human
Restrictions:	For Research Use only

Handling

Format:	Lyophilized
Reconstitution:	Distilled water
Concentration:	Lot specific
Buffer:	Lyophilized from PBS, 2 % sucrose.
Handling Advice:	Avoid repeat freeze-thaw cycles.
Storage:	4 °C, -20 °C
Storage Comment:	Long term: -20°C, the use of 50% glycerol is recommended if storing aliquots in -20°C for long term use (up to 1 year) Short term (less than 1 week): 4°C. Avoid freeze-thaw cycles.



Immunohistochemistry

Image 1. Human Placenta: Formalin-Fixed, Paraffin-Embedded (FFPE). This image was taken for the unconjugated form of this product. Other forms have not been tested.