

Datasheet for ABIN6755431
anti-GOT2 antibody (AA 36-85)



[Go to Product page](#)

1 Image

Overview

Quantity:	100 µL
Target:	GOT2
Binding Specificity:	AA 36-85
Reactivity:	Human, Mouse, Rat, Zebrafish (Danio rerio), Rabbit, Dog, Guinea Pig, Horse, Cow, Monkey
Host:	Rabbit
Clonality:	Polyclonal
Conjugate:	This GOT2 antibody is un-conjugated
Application:	Western Blotting (WB), Immunohistochemistry (IHC), Immunohistochemistry (Paraffin-embedded Sections) (IHC (p))

Product Details

Brand:	IHC-plus™
Immunogen:	Synthetic peptide located between aa36-85 of human GOT2 (P00505, NP_002071). Percent identity by BLAST analysis: Human, Chimpanzee, Gorilla, Orangutan, Monkey, Galago, Marmoset, Mouse, Rat, Hamster, Elephant, Panda, Bovine, Rabbit, Horse, Pig, Opossum, Guinea pig, Turkey, Zebra finch, Chicken, Zebrafish, Beetle (100%), Xenopus, Sea squirt, Drosophila, Mosquito (92%), Catfish, Salmon, Slime mold (91%), Stickleback (83%). Type of Immunogen: Synthetic peptide
Isotype:	IgG
Specificity:	Human GOT2

Product Details

Purification: Immunoaffinity purified

Target Details

Target: GOT2

Alternative Name: GOT2 ([GOT2 Products](#))

Background: Name/Gene ID: GOT2

Synonyms: GOT2, FABP-1, MitAAT, Transaminase A, FABPpm, Fatty acid-binding protein, KAT4, KATIV, Kynurenine aminotransferase IV, MAspAT

Gene ID: 2806

NCBI Accession: [NP_002071](#)

Pathways: [Monocarboxylic Acid Catabolic Process](#)

Application Details

Application Notes: Approved: IHC, IHC-P (10 µg/mL), WB

Usage: ELISA titer using peptide based assay: 1:312500. Western Blot: Suggested dilution at 1 µg/mL in 5 % skim milk / PBS buffer, and HRP conjugated anti-Rabbit IgG should be diluted in 1:50000 - 100000 as second antibody.

Comment: Target Species of Antibody: Human

Restrictions: For Research Use only

Handling

Format: Lyophilized

Reconstitution: Distilled Water.

Concentration: Lot specific

Buffer: Lyophilized from PBS with 2 % sucrose

Handling Advice: Avoid repeat freeze-thaw cycles.

Storage: 4 °C, -20 °C

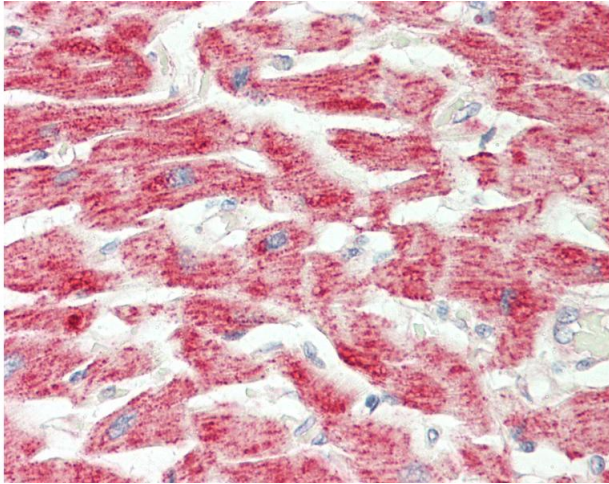
Storage Comment: Long term: -20°C, the use of 50% glycerol is recommended if storing aliquots in -20°C for long

Handling

term use (up to 1 year)

Short term (less than 1 week): 4°C. Avoid freeze-thaw cycles.

Images



Immunohistochemistry

Image 1. Human Heart: Formalin-Fixed, Paraffin-Embedded (FFPE). This image was taken for the unconjugated form of this product. Other forms have not been tested.