

Datasheet for ABIN6755432 anti-SLC6A3 antibody (AA 179-228)



[Go to Product page](#)

1 Image

Overview

Quantity:	100 µL
Target:	SLC6A3
Binding Specificity:	AA 179-228
Reactivity:	Human, Rat, Mouse, Monkey, Hamster
Host:	Rabbit
Clonality:	Polyclonal
Conjugate:	This SLC6A3 antibody is un-conjugated
Application:	Western Blotting (WB), Immunohistochemistry (IHC), Immunohistochemistry (Paraffin-embedded Sections) (IHC (p))

Product Details

Brand:	IHC-plus™
Immunogen:	Synthetic peptide located between aa179-228 of human SLC6A3 (Q01959, NP_001035). Percent identity by BLAST analysis: Human, Chimpanzee, Gorilla, Gibbon, Monkey, Marmoset, Mouse, Rat, Hamster (100%), Galago, Elephant, Horse, Guinea pig (92%), Dog, Bat, Pig, Opossum (85%). Type of Immunogen: Synthetic peptide
Specificity:	Human SLC6A3 / Dopamine Transporter
Purification:	Immunoaffinity purified

Target Details

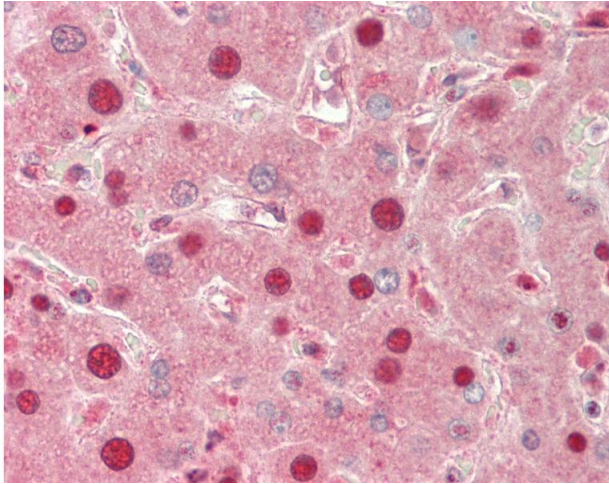
Target:	SLC6A3
Alternative Name:	SLC6A3 / Dopamine Transporter (SLC6A3 Products)
Background:	Name/Gene ID: SLC6A3 Subfamily: Neurotransmitter:sodium symporter Family: Transporter Synonyms: SLC6A3, DA transporter, DAT1, DAT, Dopamine transporter
Gene ID:	6531
NCBI Accession:	NP_001035
Pathways:	Dopaminergic Neurogenesis

Application Details

Application Notes:	Approved: IHC, IHC-P (10 µg/mL), WB (0.2 - 1 µg/mL) Usage: Western Blot: Suggested dilution at 1 µg/mL in 5 % skim milk / PBS buffer, and HRP conjugated anti-Rabbit IgG should be diluted in 1: 50,000 - 100,000 as secondary antibody.
Comment:	Target Species of Antibody: Human
Restrictions:	For Research Use only

Handling

Format:	Lyophilized
Reconstitution:	Distilled water
Concentration:	Lot specific
Buffer:	Lyophilized from PBS with 2 % sucrose
Handling Advice:	Avoid repeat freeze-thaw cycles.
Storage:	4 °C,-20 °C
Storage Comment:	Long term: -20°C, the use of 50% glycerol is recommended if storing aliquots in -20°C for long term use (up to 1 year) Short term (less than 1 week): 4°C. Avoid freeze-thaw cycles.



Immunohistochemistry

Image 1. Human Liver: Formalin-Fixed, Paraffin-Embedded (FFPE). This image was taken for the unconjugated form of this product. Other forms have not been tested.