



[Go to Product page](#)

Datasheet for ABIN6755434
anti-ENPP2 antibody (AA 215-264)

1 Image

Overview

Quantity:	100 µL
Target:	ENPP2
Binding Specificity:	AA 215-264
Reactivity:	Human, Mouse, Monkey, Dog, Guinea Pig, Horse, Rabbit, Bat, Pig
Host:	Rabbit
Clonality:	Polyclonal
Conjugate:	This ENPP2 antibody is un-conjugated
Application:	Western Blotting (WB), Immunohistochemistry (IHC), Immunohistochemistry (Paraffin-embedded Sections) (IHC (p))

Product Details

Brand:	IHC-plus™
Immunogen:	Synthetic peptide located between aa215-264 of human ENPP2 (Q13822, NP_001035181). Percent identity by BLAST analysis: Human, Chimpanzee, Gorilla, Orangutan, Gibbon, Monkey, Galago, Marmoset, Mouse, Dog, Bat, Rabbit, Horse, Pig, Opossum, Guinea pig (100%), Rat, Elephant, Platypus (92%), Bovine, Turkey, Chicken (85%). Type of Immunogen: Synthetic peptide
Specificity:	Human ENPP2 / Autotaxin
Purification:	Immunoaffinity purified

Target Details

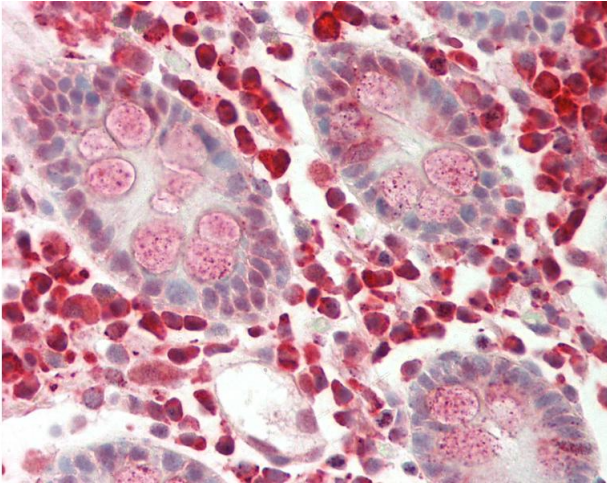
Target:	ENPP2
Alternative Name:	ENPP2 / Autotaxin (ENPP2 Products)
Background:	Name/Gene ID: ENPP2 Family: Phosphodiesterase - Other Synonyms: ENPP2, AUTOTAXIN, Autotaxin-t, ATX-X, E-NPP 2, LysoPLD, NPP2, PDNP2, PD-IALPHA, Plasma lysophospholipase D, Phosphodiesterase I alpha
Gene ID:	5168
NCBI Accession:	NP_001035181

Application Details

Application Notes:	Approved: IHC, IHC-P (10 µg/mL), WB (0.2 - 1 µg/mL) Usage: Western Blot: Suggested dilution at 1 µg/mL in 5 % skim milk / PBS buffer, and HRP conjugated anti-Rabbit IgG should be diluted in 1: 50,000 - 100,000 as secondary antibody.
Comment:	Target Species of Antibody: Human
Restrictions:	For Research Use only

Handling

Format:	Lyophilized
Reconstitution:	Distilled water
Concentration:	Lot specific
Buffer:	Lyophilized from PBS with 2 % sucrose
Handling Advice:	Avoid repeat freeze-thaw cycles.
Storage:	4 °C, -20 °C
Storage Comment:	Long term: -20°C, the use of 50% glycerol is recommended if storing aliquots in -20°C for long term use (up to 1 year) Short term (less than 1 week): 4°C. Avoid freeze-thaw cycles.



Immunohistochemistry

Image 1. Human Colon: Formalin-Fixed, Paraffin-Embedded (FFPE). This image was taken for the unconjugated form of this product. Other forms have not been tested.