

Datasheet for ABIN6755435  
**anti-ACVR2B antibody (AA 323-372)**



[Go to Product page](#)

1 Image

## Overview

Quantity:	100 µL
Target:	ACVR2B
Binding Specificity:	AA 323-372
Reactivity:	Human, Mouse, Rat, Dog, Cow, Horse, Sheep, Guinea Pig, Zebrafish (Danio rerio), Pig, Hamster, Bat, Monkey, Chicken, Xenopus laevis
Host:	Rabbit
Clonality:	Polyclonal
Conjugate:	This ACVR2B antibody is un-conjugated
Application:	Western Blotting (WB), Immunohistochemistry (IHC), Immunohistochemistry (Paraffin-embedded Sections) (IHC (p))

## Product Details

Brand:	IHC-plus™
Immunogen:	<p>Synthetic peptide located between aa323-372 of human ACVR2B (Q13705, NP_001097).</p> <p>Percent identity by BLAST analysis: Human, Chimpanzee, Gorilla, Gibbon, Monkey, Galago, Marmoset, Mouse, Rat, Sheep, Hamster, Elephant, Panda, Dog, Bovine, Bat, Horse, Pig, Opossum, Guinea pig, Turkey, Chicken, Xenopus, Trout, Zebrafish (100%), Goat, Drosophila (84%).</p> <p>Type of Immunogen: Synthetic peptide</p>
Specificity:	Human ACVR2B

## Product Details

Purification: Immunoaffinity purified

## Target Details

Target:	ACVR2B
Alternative Name:	ACTRIIB / ACVR2B ( <a href="#">ACVR2B Products</a> )
Background:	Name/Gene ID: ACVR2B Subfamily: Activin/TGFb Family: Protein Kinase  Synonyms: ACVR2B, Activin A receptor type IIB, Activin receptor type-2B, ActR-IIB, ACTRIIB, Activin receptor type IIB, Activin A receptor, type IIB, HTX4
Gene ID:	93
NCBI Accession:	<a href="#">NP_001097</a>
Pathways:	<a href="#">Hormone Transport</a> , <a href="#">Cancer Immune Checkpoints</a>

## Application Details

Application Notes:	Approved: IHC, IHC-P (10 µg/mL), WB (0.2 - 1 µg/mL)  Usage: Western Blot: Suggested dilution at 1 µg/mL in 5 % skim milk / PBS buffer, and HRP conjugated anti-Rabbit IgG should be diluted in 1: 50,000 - 100,000 as secondary antibody.
Comment:	Target Species of Antibody: Human
Restrictions:	For Research Use only

## Handling

Format:	Lyophilized
Reconstitution:	Distilled water
Concentration:	Lot specific
Buffer:	Lyophilized from PBS with 2 % sucrose
Handling Advice:	Avoid repeat freeze-thaw cycles.
Storage:	4 °C,-20 °C

## Handling

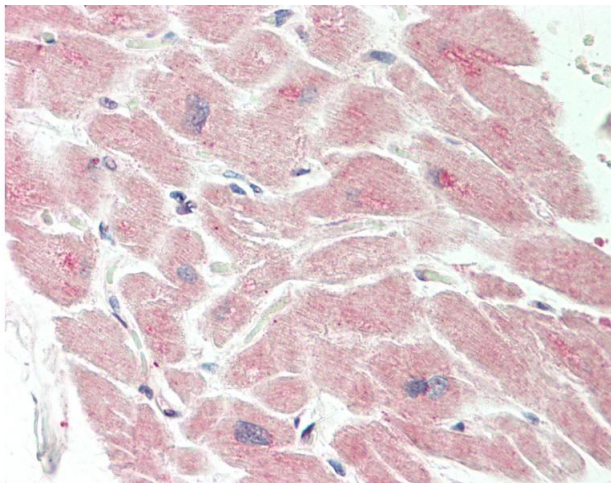
---

Storage Comment: Long term: -20°C, the use of 50% glycerol is recommended if storing aliquots in -20°C for long term use (up to 1 year)

Short term (less than 1 week): 4°C. Avoid freeze-thaw cycles.

## Images

---



### Immunohistochemistry

**Image 1.** Human Heart: Formalin-Fixed, Paraffin-Embedded (FFPE). This image was taken for the unconjugated form of this product. Other forms have not been tested.