

Datasheet for ABIN6755437  
**anti-NR2E1 antibody (AA 144-193)**[Go to Product page](#)

## 1 Image

## Overview

Quantity:	100 µL
Target:	NR2E1
Binding Specificity:	AA 144-193
Reactivity:	Human, Mouse, Rat, Rabbit, Cow, Dog, Horse, Guinea Pig, Pig, Bat, Monkey, Chicken, Xenopus laevis
Host:	Rabbit
Clonality:	Polyclonal
Conjugate:	This NR2E1 antibody is un-conjugated
Application:	Western Blotting (WB), Immunohistochemistry (IHC), Immunohistochemistry (Paraffin-embedded Sections) (IHC (p))

## Product Details

Brand:	IHC-plus™
Immunogen:	Synthetic peptide located between aa144-193 of human NR2E1 (Q64104, NP_003260). Percent identity by BLAST analysis: Human, Chimpanzee, Gorilla, Gibbon, Baboon, Monkey, Galago, Marmoset, Mouse, Rat, Shrew, Elephant, Panda, Dog, Bovine, Bat, Rabbit, Horse, Pig, Opossum, Guinea pig, Sparrow, Chicken, Armadillo, Platypus, Xenopus (100%), Zebra finch (93%), Lizard, Stickleback, Medaka, Pufferfish, Zebrafish (92%).  Type of Immunogen: Synthetic peptide
Isotype:	IgG

## Product Details

Specificity:	Human NR2E1
Purification:	Immunoaffinity purified

## Target Details

Target:	NR2E1
Alternative Name:	NR2E1 / TLX ( <a href="#">NR2E1 Products</a> )
Background:	Name/Gene ID: NR2E1 Subfamily: NR2 Hepatocyte NF4-like Family: NHR  Synonyms: NR2E1, HTII, Tailless homolog, Tailless, TLX, TLL, Nuclear receptor TLX, Protein tailless homolog, Tailes-related receptor, XTLL
Gene ID:	7101
NCBI Accession:	<a href="#">NP_003260</a>
Pathways:	<a href="#">Nuclear Receptor Transcription Pathway</a> , <a href="#">Steroid Hormone Mediated Signaling Pathway</a> , <a href="#">Stem Cell Maintenance</a>

## Application Details

Application Notes:	Approved: IHC, IHC-P (10 µg/mL), WB (0.2 - 1 µg/mL)  Usage: ELISA titer using peptide based assay: 1:312500. Western Blot: Suggested dilution at 1 µg/mL in 5 % skim milk / PBS buffer, and HRP conjugated anti-Rabbit IgG should be diluted in 1:50000 - 100000 as second antibody.
Comment:	Target Species of Antibody: Human
Restrictions:	For Research Use only

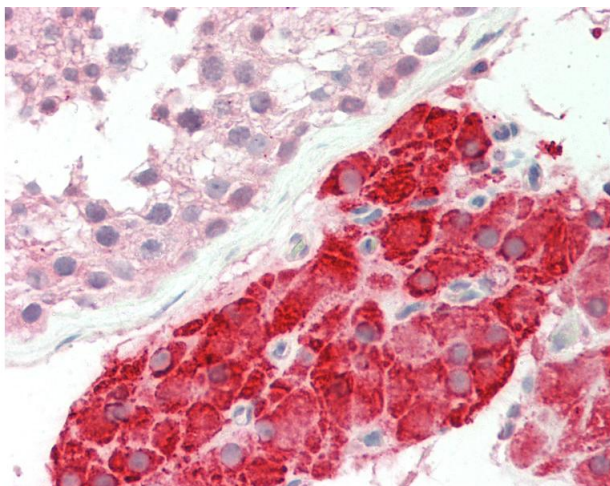
## Handling

Format:	Lyophilized
Reconstitution:	Distilled Water.
Concentration:	Lot specific
Buffer:	Lyophilized from PBS with 2 % sucrose

## Handling

Handling Advice:	Avoid repeat freeze-thaw cycles.
Storage:	4 °C,-20 °C
Storage Comment:	Long term: -20°C, the use of 50% glycerol is recommended if storing aliquots in -20°C for long term use (up to 1 year) Short term (less than 1 week): 4°C. Avoid freeze-thaw cycles.

## Images



### Immunohistochemistry

**Image 1.** Human Testis: Formalin-fixed, paraffin embedded (FFPE) tissue. This image was taken for the unconjugated form of this product. Other forms have not been tested.