

Datasheet for ABIN6755439
anti-CAD antibody (N-Term)[Go to Product page](#)

1 Image

Overview

Quantity:	100 µL
Target:	CAD
Binding Specificity:	N-Term
Reactivity:	Human, Mouse, Rat, Dog, Horse, Guinea Pig, Cow, Bat, Hamster
Host:	Rabbit
Clonality:	Polyclonal
Conjugate:	This CAD antibody is un-conjugated
Application:	Western Blotting (WB), Immunohistochemistry (IHC), Immunohistochemistry (Paraffin-embedded Sections) (IHC (p))

Product Details

Brand:	IHC-plus™
Immunogen:	Synthetic peptide from N-Terminus of human CAD (P27708, NP_004332). Percent identity by BLAST analysis: Human, Chimpanzee, Gorilla, Gibbon, Galago, Mouse, Rat, Hamster, Elephant, Panda, Dog, Bovine, Bat, Horse, Opossum, Guinea pig (100%), Rabbit, Chicken, Xenopus, Zebrafish (92%), Sheep, Trout, Beetle (85%). Type of Immunogen: Synthetic peptide
Isotype:	IgG
Specificity:	Human CAD
Purification:	Immunoaffinity purified

Target Details

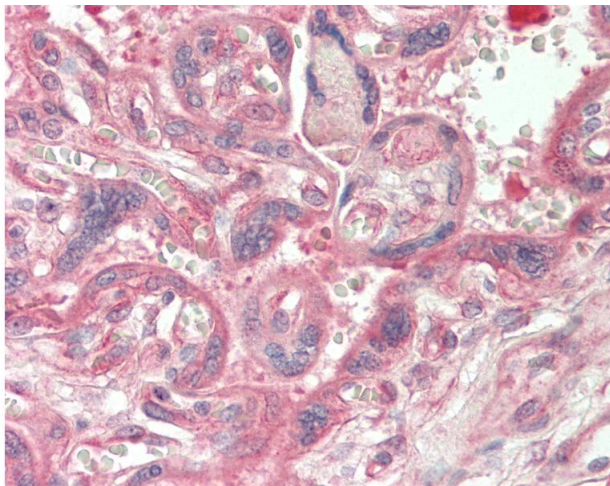
Target:	CAD
Alternative Name:	CAD (CAD Products)
Background:	Name/Gene ID: CAD Subfamily: Metallopeptidase M38 Family: Protease Synonyms: CAD, CAD trifunctional protein, DFF-40, DFF40, CAD protein, CPAN, DFF2
Gene ID:	790
NCBI Accession:	NP_004332
Pathways:	Production of Molecular Mediator of Immune Response , Ribonucleoside Biosynthetic Process

Application Details

Application Notes:	Approved: IHC, IHC-P (10 µg/mL), WB (0.2 - 1 µg/mL) Usage: ELISA titer using peptide based assay: 1:62500. Western Blot: Suggested dilution at 1 µg/mL in 5 % skim milk / PBS buffer, and HRP conjugated anti-Rabbit IgG should be diluted in 1:50000 - 100000 as second antibody.
Comment:	Target Species of Antibody: Human
Restrictions:	For Research Use only

Handling

Format:	Lyophilized
Reconstitution:	Distilled Water.
Concentration:	Lot specific
Buffer:	Lyophilized from PBS with 2 % sucrose
Handling Advice:	Avoid repeat freeze-thaw cycles.
Storage:	4 °C, -20 °C
Storage Comment:	Long term: -20°C, the use of 50% glycerol is recommended if storing aliquots in -20°C for long term use (up to 1 year) Short term (less than 1 week): 4°C. Avoid freeze-thaw cycles.



Immunohistochemistry

Image 1. Human Placenta: Formalin-Fixed, Paraffin-Embedded (FFPE). This image was taken for the unconjugated form of this product. Other forms have not been tested.