



[Go to Product page](#)

Datasheet for ABIN6755440  
**anti-VAMP7 antibody (AA 134-183)**

1 Image

Overview

Quantity:	100 µL
Target:	VAMP7
Binding Specificity:	AA 134-183
Reactivity:	Human, Mouse, Rat, Dog, Cow, Guinea Pig, Horse, Rabbit, Sheep, Zebrafish (Danio rerio), Bat, Hamster, Monkey, Pig, Xenopus laevis
Host:	Rabbit
Clonality:	Polyclonal
Conjugate:	This VAMP7 antibody is un-conjugated
Application:	Western Blotting (WB), Immunohistochemistry (IHC), Immunohistochemistry (Paraffin-embedded Sections) (IHC (p))

Product Details

Brand:	IHC-plus™
Immunogen:	Synthetic peptide located between aa134-183 of mouse Vamp7 (P70280, NP_035645). Percent identity by BLAST analysis: Human, Orangutan, Gibbon, Monkey, Marmoset, Mouse, Rat, Sheep, Hamster, Elephant, Panda, Dog, Bovine, Bat, Rabbit, Horse, Pig, Opossum, Guinea pig, Platypus, Xenopus, Zebrafish (100%), Turkey, Zebra finch, Chicken, Catfish, Stickleback, Arabidopsis (92%), Grape (85%), Rice (83%).  Type of Immunogen: Synthetic peptide
Specificity:	Mouse VAMP7 / SYBL1

## Product Details

---

Purification: Immunoaffinity purified

## Target Details

---

Target: VAMP7

Alternative Name: VAMP7 / SYBL1 / T1 VAMP ([VAMP7 Products](#))

Background: Name/Gene ID: VAMP7

Synonyms: VAMP7, Synaptobrevin-like protein 1, Tetanus-insensitive VAMP, SYBL1, Synaptobrevin-like 1, VAMP-7, TI-VAMP, TIVAMP

Gene ID: 6845

NCBI Accession: [NP\\_035645](#)

## Application Details

---

Application Notes: Approved: IHC, IHC-P (10 µg/mL), WB

Comment: Target Species of Antibody: Mouse

Restrictions: For Research Use only

## Handling

---

Format: Lyophilized

Reconstitution: Reconstitute with 50 µL sterile ddH<sub>2</sub>O.

Concentration: Lot specific

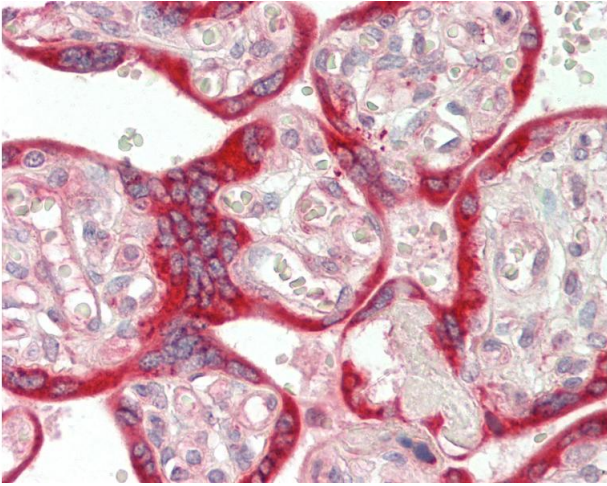
Buffer: Lyophilized from PBS with 2 % sucrose

Handling Advice: Avoid repeat freeze-thaw cycles.

Storage: 4 °C, -20 °C

Storage Comment: Long term: -20°C, the use of 50% glycerol is recommended if storing aliquots in -20°C for long term use (up to 1 year)

Short term (less than 1 week): 4°C. Avoid freeze-thaw cycles.



### Immunohistochemistry

**Image 1.** Human Placenta: Formalin-Fixed, Paraffin-Embedded (FFPE). This image was taken for the unconjugated form of this product. Other forms have not been tested.