

Datasheet for ABIN6755454  
**anti-IGFBP2 antibody (AA 215-264)**[Go to Product page](#)

## 1 Image

## Overview

|                      |  |
|----------------------|--|
| Quantity:            | 100 µL   |
| Target:              | IGFBP2   |
| Binding Specificity: | AA 215-264   |
| Reactivity:          | Human, Rat, Mouse, Cow, Pig, Sheep, Guinea Pig, Rabbit, Dog, Horse, Monkey, Bat, Chicken                       |
| Host:                | Rabbit   |
| Clonality:           | Polyclonal   |
| Conjugate:           | This IGFBP2 antibody is un-conjugated  |
| Application:         | Western Blotting (WB), Immunohistochemistry (IHC), Immunohistochemistry (Paraffin-embedded Sections) (IHC (p)) |

## Product Details

|               |  |
|---------------|--|
| Brand:        | IHC-plus™  |
| Immunogen:    | Synthetic peptide located between aa215-264 of human IGFBP2 (P18065, NP_000588). Percent identity by BLAST analysis: Human, Chimpanzee, Gorilla, Gibbon, Monkey, Galago, Marmoset, Mouse, Rat, Sheep, Elephant, Dog, Bovine, Bat, Horse, Pig, Opossum, Guinea pig, Turkey, Zebra finch, Chicken (100%), Xenopus (92%), Trout, Medaka, Zebrafish (85%).<br><br>Type of Immunogen: Synthetic peptide |
| Isotype:      | IgG  |
| Specificity:  | Human IGFBP2   |
| Purification: | Immunoaffinity purified  |

## Target Details

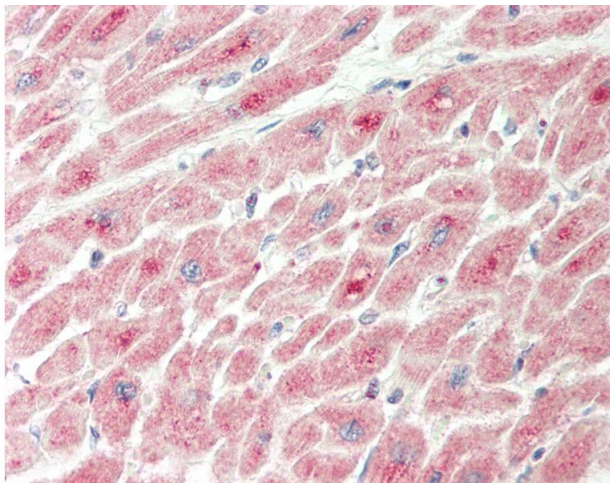
|                   |  |
|-------------------|--|
| Target:           | IGFBP2   |
| Alternative Name: | IGFBP2 / IGF-BP53 ( <a href="#">IGFBP2 Products</a> )  |
| Background:       | Name/Gene ID: IGFBP2<br><br>Synonyms: IGFBP2, BP2, IGFBP-2, IGF-binding protein 2, IBP-2, IBP2, IGF-BP53                                       |
| Gene ID:          | 3485   |
| NCBI Accession:   | <a href="#">NP_000588</a>  |
| Pathways:         | <a href="#">Myometrial Relaxation and Contraction</a> , <a href="#">Growth Factor Binding</a> , <a href="#">Activated T Cell Proliferation</a> |

## Application Details

|                    |   |
|--------------------|---|
| Application Notes: | Approved: IHC, IHC-P (10 µg/mL), WB (0.2 - 1 µg/mL)<br><br>Usage: Western Blot: Suggested dilution at 1 µg/mL in 5 % skim milk / PBS buffer, and HRP conjugated anti-Rabbit IgG should be diluted in 1: 50,000 - 100,000 as second antibody. ELISA titer in peptide based assay: 1:1562500. |
| Comment:           | Target Species of Antibody: Human   |
| Restrictions:      | For Research Use only   |

## Handling

|                  |   |
|------------------|---|
| Format:          | Lyophilized   |
| Reconstitution:  | Distilled water   |
| Concentration:   | Lot specific  |
| Buffer:          | Lyophilized from PBS with 2 % sucrose   |
| Handling Advice: | Avoid repeat freeze-thaw cycles.  |
| Storage:         | 4 °C, -20 °C  |
| Storage Comment: | Long term: -20°C, the use of 50% glycerol is recommended if storing aliquots in -20°C for long term use (up to 1 year)<br><br>Short term (less than 1 week): 4°C. Avoid freeze-thaw cycles. |



#### Immunohistochemistry

**Image 1.** Human Heart: Formalin-Fixed, Paraffin-Embedded (FFPE). This image was taken for the unconjugated form of this product. Other forms have not been tested.