

Datasheet for ABIN6755457
anti-RHOB antibody (AA 107-156)[Go to Product page](#)

1 Image

Overview

Quantity:	100 µL
Target:	RHOB
Binding Specificity:	AA 107-156
Reactivity:	Human, Mouse, Rat, Cow, Goat, Horse, Pig, Sheep, Bat, Hamster
Host:	Rabbit
Clonality:	Polyclonal
Conjugate:	This RHOB antibody is un-conjugated
Application:	Western Blotting (WB), Immunohistochemistry (IHC), Immunohistochemistry (Paraffin-embedded Sections) (IHC (p))

Product Details

Brand:	IHC-plus™
Immunogen:	Synthetic peptide located between aa107-156 of human RHOB (P62745, NP_004031). Percent identity by BLAST analysis: Human, Chimpanzee, Gorilla, Gibbon, Galago, Mouse, Rat, Sheep, Goat, Hamster, Elephant, Panda, Bovine, Bat, Horse, Pig (100%), Turkey, Zebra finch, Chicken, Platypus, Lizard, Xenopus (85%). Type of Immunogen: Synthetic peptide
Specificity:	Human RHOB
Purification:	Immunoaffinity purified

Target Details

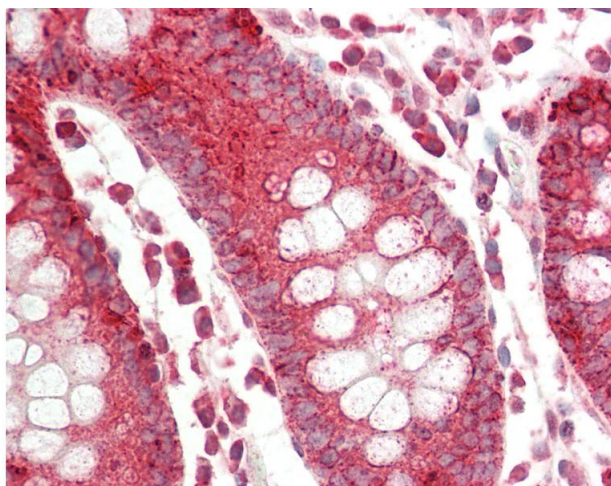
Target:	RHOB
Alternative Name:	RHOB (RHOB Products)
Background:	Name/Gene ID: RHOB Family: Ras GTPase superfamily IPR001806 Synonyms: RHOB, Aplysia RAS-related homolog 6, ARH6, H6, MST081, Oncogene RHO H6, RHOB6, Ras homolog family member B, ARHB, Transforming protein rhob, MSTP081, Rho cDNA clone 6
Gene ID:	388
NCBI Accession:	NP_004031

Application Details

Application Notes:	Approved: IHC, IHC-P (10 µg/mL), WB (0.2 - 1 µg/mL) Usage: Western Blot: Suggested dilution at 1 µg/mL in 5 % skim milk / PBS buffer, and HRP conjugated anti-Rabbit IgG should be diluted in 1: 50,000 - 100,000 as secondary antibody.
Comment:	Target Species of Antibody: Human
Restrictions:	For Research Use only

Handling

Format:	Lyophilized
Reconstitution:	Distilled water
Concentration:	Lot specific
Buffer:	Lyophilized from PBS with 2 % sucrose
Handling Advice:	Avoid repeat freeze-thaw cycles.
Storage:	4 °C, -20 °C
Storage Comment:	Long term: -20°C, the use of 50% glycerol is recommended if storing aliquots in -20°C for long term use (up to 1 year) Short term (less than 1 week): 4°C. Avoid freeze-thaw cycles.



Immunohistochemistry

Image 1. Human Colon: Formalin-Fixed, Paraffin-Embedded (FFPE). This image was taken for the unconjugated form of this product. Other forms have not been tested.