



[Go to Product page](#)

Datasheet for ABIN6755458
anti-ICA1 antibody (C-Term)

1 Image

Overview

Quantity:	100 µL
Target:	ICA1
Binding Specificity:	C-Term
Reactivity:	Human, Mouse, Dog, Guinea Pig, Horse, Bat, Monkey, Xenopus laevis, Chicken
Host:	Rabbit
Clonality:	Polyclonal
Conjugate:	This ICA1 antibody is un-conjugated
Application:	Western Blotting (WB), Immunohistochemistry (IHC), Immunohistochemistry (Paraffin-embedded Sections) (IHC (p))

Product Details

Brand:	IHC-plus™
Immunogen:	Synthetic peptide from C-Terminus of human ICA1 (Q05084, NP_071682). Percent identity by BLAST analysis: Human, Chimpanzee, Gorilla, Orangutan, Gibbon, Monkey, Marmoset, Mouse, Elephant, Panda, Dog, Bat, Horse, Guinea pig, Turkey, Chicken, Lizard, Xenopus (100%), Galago, Rat, Bovine (92%), Stickleback (85%). Type of Immunogen: Synthetic peptide
Isotype:	IgG
Specificity:	Human ICA1
Purification:	Immunoaffinity purified

Target Details

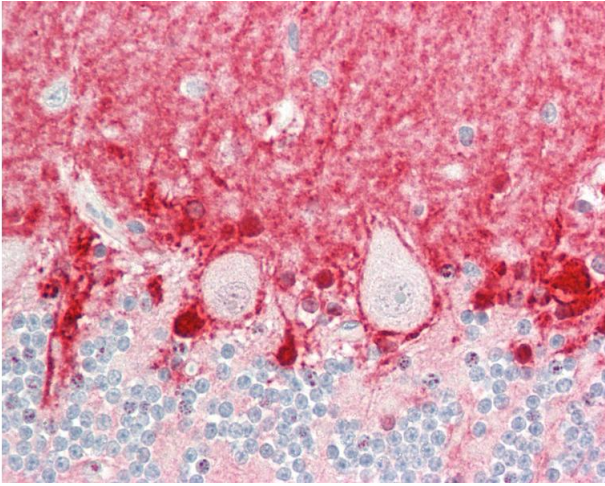
Target:	ICA1
Alternative Name:	ICA69 / ICA1 (ICA1 Products)
Background:	Name/Gene ID: ICA1 Synonyms: ICA1, 69 kDa islet cell autoantigen, ICA69, Islet cell autoantigen 1, p69, Islet cell autoantigen p69, ICAp69
Gene ID:	3382
NCBI Accession:	NP_071682

Application Details

Application Notes:	Approved: IHC, IHC-P (10 µg/mL), WB (0.2 - 1 µg/mL) Usage: ELISA titer using peptide based assay: 1:312500. Western Blot: Suggested dilution at 1 µg/mL in 5 % skim milk / PBS buffer, and HRP conjugated anti-Rabbit IgG should be diluted in 1:50000 - 100000 as second antibody.
Comment:	Target Species of Antibody: Human
Restrictions:	For Research Use only

Handling

Format:	Lyophilized
Reconstitution:	Distilled Water.
Concentration:	Lot specific
Buffer:	Lyophilized from PBS with 2 % sucrose
Handling Advice:	Avoid repeat freeze-thaw cycles.
Storage:	4 °C, -20 °C
Storage Comment:	Long term: -20°C, the use of 50% glycerol is recommended if storing aliquots in -20°C for long term use (up to 1 year) Short term (less than 1 week): 4°C. Avoid freeze-thaw cycles.



Immunohistochemistry

Image 1. Human Brain, Cerebellum: Formalin-Fixed, Paraffin-Embedded (FFPE). This image was taken for the unconjugated form of this product. Other forms have not been tested.