



[Go to Product page](#)

Datasheet for ABIN6755460
anti-PDE4B antibody (AA 467-516)

1 Image

Overview

Quantity:	100 µL
Target:	PDE4B
Binding Specificity:	AA 467-516
Reactivity:	Human, Rat, Guinea Pig, Horse, Cow, Dog, Pig, Bat, Monkey
Host:	Rabbit
Clonality:	Polyclonal
Conjugate:	This PDE4B antibody is un-conjugated
Application:	Western Blotting (WB), Immunohistochemistry (IHC), Immunohistochemistry (Paraffin-embedded Sections) (IHC (p))

Product Details

Brand:	IHC-plus™
Immunogen:	Synthetic peptide located between aa467-516 of human PDE4B (Q5TEK5, NP_001032416). Percent identity by BLAST analysis: Human, Chimpanzee, Gorilla, Gibbon, Monkey, Marmoset, Rat, Dog, Bovine, Bat, Horse, Pig (100%), Galago, Elephant, Rabbit, Opossum (92%), Turkey, Zebra finch, Chicken (90%), Mouse (85%). Type of Immunogen: Synthetic peptide
Specificity:	Human PDE4B
Purification:	Immunoaffinity purified

Target Details

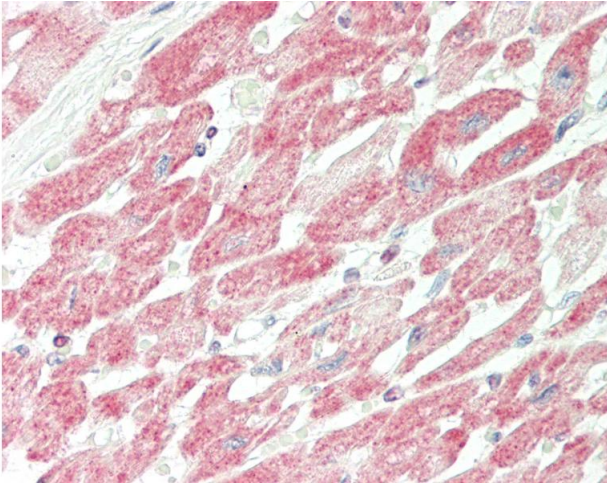
Target:	PDE4B
Alternative Name:	PDE4B (PDE4B Products)
Background:	Name/Gene ID: PDE4B Subfamily: PDE - cAMP-specific Family: Phosphodiesterase Synonyms: PDE4B, Pde-ivb, PDE32, PDE4B5, PDEIVB, Phosphodiesterase 4b, DPDE4, PDE4B3
Gene ID:	5142
NCBI Accession:	NP_001032416
Pathways:	Cellular Response to Molecule of Bacterial Origin , cAMP Metabolic Process , Myometrial Relaxation and Contraction

Application Details

Application Notes:	Approved: IHC, IHC-P (10 µg/mL), WB (0.2 - 1 µg/mL) Usage: Western Blot: Suggested dilution at 1 µg/mL in 5 % skim milk / PBS buffer, and HRP conjugated anti-Rabbit IgG should be diluted in 1: 50,000 - 100,000 as secondary antibody.
Comment:	Target Species of Antibody: Human
Restrictions:	For Research Use only

Handling

Format:	Lyophilized
Reconstitution:	Distilled water
Concentration:	Lot specific
Buffer:	Lyophilized from PBS with 2 % sucrose
Handling Advice:	Avoid repeat freeze-thaw cycles.
Storage:	4 °C, -20 °C
Storage Comment:	Long term: -20°C, the use of 50% glycerol is recommended if storing aliquots in -20°C for long term use (up to 1 year) Short term (less than 1 week): 4°C. Avoid freeze-thaw cycles.



Immunohistochemistry

Image 1. Human Heart: Formalin-Fixed, Paraffin-Embedded (FFPE). This image was taken for the unconjugated form of this product. Other forms have not been tested.