

Datasheet for ABIN6755463 anti-PSMA5 antibody (AA 143-192)



[Go to Product page](#)

1 Image

Overview

Quantity:	100 µL
Target:	PSMA5
Binding Specificity:	AA 143-192
Reactivity:	Human, Mouse, Rat, Cow, Chicken, Zebrafish (Danio rerio), Pig, Rabbit, Guinea Pig, Horse, Monkey, Xenopus laevis, Dog, Bat
Host:	Rabbit
Clonality:	Polyclonal
Conjugate:	This PSMA5 antibody is un-conjugated
Application:	Western Blotting (WB), Immunohistochemistry (IHC), Immunohistochemistry (Paraffin-embedded Sections) (IHC (p))

Product Details

Brand:	IHC-plus™
Immunogen:	Synthetic peptide located between aa143-192 of human PSMA5 (P28066, NP_002781). Percent identity by BLAST analysis: Human, Chimpanzee, Gorilla, Gibbon, Monkey, Galago, Marmoset, Mouse, Rat, Elephant, Panda, Dog, Bovine, Bat, Rabbit, Horse, Pig, Opossum, Guinea pig, Zebra finch, Chicken, Platypus, Lizard, Xenopus, Catfish, Salmon, Sablefish, Stickleback, Pike, Zebrafish (100%), Beetle (84%). Type of Immunogen: Synthetic peptide
Specificity:	Human PSMA5 / ZETA

Product Details

Purification: Immunoaffinity purified

Target Details

Target: PSMA5

Alternative Name: PSMA5 ([PSMA5 Products](#))

Background: Name/Gene ID: PSMA5
Subfamily: Threonine T1
Family: Protease Non Catalytic

Synonyms: PSMA5, Proteasome component 5, Proteasome subunit zeta, Proteasome alpha 5 subunit, Macropain zeta chain, Zeta, Proteasome zeta chain, Macropain subunit zeta, Proteasome alpha-type 5, PSC5

Gene ID: 5686

NCBI Accession: [NP_002781](#)

Pathways: [Mitotic G1-G1/S Phases](#), [DNA Replication](#), [Synthesis of DNA](#)

Application Details

Application Notes: Approved: IHC, IHC-P (10 µg/mL), WB (0.2 - 1 µg/mL)

Usage: Western Blot: Suggested dilution at 1 µg/mL in 5 % skim milk / PBS buffer, and HRP conjugated anti-Rabbit IgG should be diluted in 1: 50,000 - 100,000 as secondary antibody.

Comment: Target Species of Antibody: Human

Restrictions: For Research Use only

Handling

Format: Lyophilized

Reconstitution: Distilled water

Concentration: Lot specific

Buffer: Lyophilized from PBS with 2 % sucrose

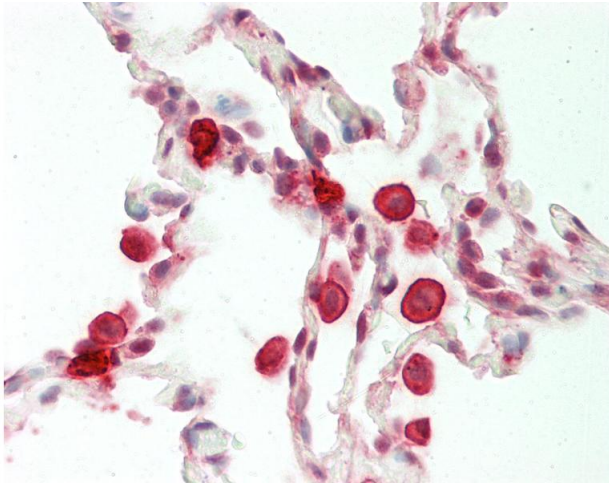
Handling Advice: Avoid repeat freeze-thaw cycles.

Handling

Storage: 4 °C, -20 °C

Storage Comment: Long term: -20°C, the use of 50% glycerol is recommended if storing aliquots in -20°C for long term use (up to 1 year)
Short term (less than 1 week): 4°C. Avoid freeze-thaw cycles.

Images



Immunohistochemistry

Image 1. Human Lung: Formalin-Fixed, Paraffin-Embedded (FFPE). This image was taken for the unconjugated form of this product. Other forms have not been tested.