



[Go to Product page](#)

Datasheet for ABIN6755470
anti-MYL6 antibody (N-Term)

1 Image

Overview

Quantity:	100 µL
Target:	MYL6
Binding Specificity:	N-Term
Reactivity:	Human, Mouse, Rat, Cow, Dog, Guinea Pig, Horse, Rabbit, Pig, Bat, Monkey, Chicken
Host:	Rabbit
Clonality:	Polyclonal
Conjugate:	This MYL6 antibody is un-conjugated
Application:	Western Blotting (WB), Immunohistochemistry (IHC), Immunohistochemistry (Paraffin-embedded Sections) (IHC (p))

Product Details

Brand:	IHC-plus™
Immunogen:	Synthetic peptide from N-Terminus of human MYL6 (P60660, NP_524147). Percent identity by BLAST analysis: Human, Chimpanzee, Gorilla, Orangutan, Monkey, Galago, Marmoset, Mouse, Rat, Elephant, Dog, Bovine, Bat, Rabbit, Horse, Pig, Guinea pig, Zebra finch, Chicken, Lizard, Sablefish (100%), Trout, Salmon, Smelt, Pike (92%), Xenopus, Zebrafish (91%), Hamster (85%), Panda (84%), Frog (83%). Type of Immunogen: Synthetic peptide
Specificity:	Human MYL6
Purification:	Immunoaffinity purified

Target Details

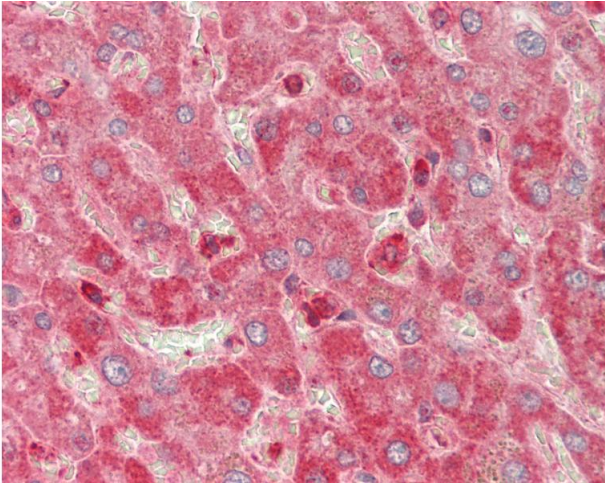
Target:	MYL6
Alternative Name:	MYL6 (MYL6 Products)
Background:	Name/Gene ID: MYL6 Synonyms: MYL6, 17 kDa myosin light chain, ESMLC, LC17, LC17B, LC17-GI, LC17A, MLC3NM, MLC1SM, MLC3SM, Myosin light chain A3, Myosin light chain 3, LC17-NM, MLC-3, Myosin light polypeptide 6, Myosin light chain alkali 3
Gene ID:	4637
NCBI Accession:	NP_524147

Application Details

Application Notes:	Approved: IHC, IHC-P (10 µg/mL), WB (1 µg/mL) Usage: Western Blot: Suggested dilution at 1 µg/mL in 5 % skim milk / PBS buffer, and HRP conjugated anti-Rabbit IgG should be diluted in 1: 50,000 - 100,000 as secondary antibody.
Comment:	Target Species of Antibody: Human
Restrictions:	For Research Use only

Handling

Format:	Lyophilized
Reconstitution:	Distilled water
Concentration:	Lot specific
Buffer:	Lyophilized from PBS with 2 % sucrose
Handling Advice:	Avoid repeat freeze-thaw cycles.
Storage:	4 °C, -20 °C
Storage Comment:	Long term: -20°C, the use of 50% glycerol is recommended if storing aliquots in -20°C for long term use (up to 1 year) Short term (less than 1 week): 4°C. Avoid freeze-thaw cycles.



Immunohistochemistry

Image 1. Human Liver: Formalin-Fixed, Paraffin-Embedded (FFPE). This image was taken for the unconjugated form of this product. Other forms have not been tested.